

Lamin A/C Polyclonal Antibody

Catalog number: 10298-1-AP

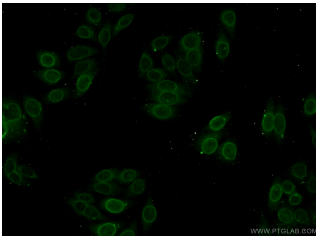
Size: 55 µg/150 µl

Source: Rabbit

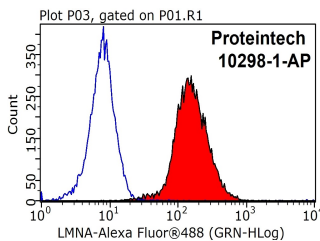
Isotype: IgG

Synonyms:

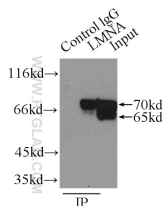
LMNA; 70 kDa lamin, CDCD1, CDDC, CMD1A, CMT2B1, EMD2, FPL, FPLD, HGPS, IDC, lamin A, lamin A/C, LDP1, LFP, LGMD1B, LMN1, LMNA, LMNC, Prelamin A/C, PRO1



Immunofluorescent analysis of HepG2 cells using 10298-1-AP (Lamin A/C Antibody) at dilution of 1:50 and Alexa Fluor 488-conjugated AffiniPure Goat Anti-Rabbit IgG(H+L)



1X10⁶ HEK-293T cells were stained with 0.2µg Lamin A/C antibody (10298-1-AP, red) and control antibody (blue). Fixed with 90% MeOH blocked with 3% BSA (30 min). Alexa Fluor 488-conjugated AffiniPure Goat Anti-Rabbit IgG(H+L) with dilution 1:1000.



IP Result of anti-lamin-A (IP:10298-1-AP, 3µg; Detection:10298-1-AP 1:1000) with A375 cells lysate 800µg.

Background

Lamin A/C is also named as LMNA, FPL, LFP, EMD2, FPLD, HGPS, LDP1, LMN1. The lamin family of proteins make up the matrix and are highly conserved in evolution. During mitosis, the lamina matrix is reversibly disassembled as the lamin proteins are phosphorylated. Lamin proteins are thought to be involved in nuclear stability, chromatin structure and gene expression. The lack of lamin A/C can be as a novel marker for undifferentiated embryonic stem cells and lamin A/C expression is as an early indicator of differentiation(PMID: 16179429). Mutations in this gene lead to several diseases: Emery-Dreifuss muscular dystrophy, familial partial lipodystrophy, limb girdle muscular dystrophy, dilated cardiomyopathy, Charcot-Marie-Tooth disease, and Hutchinson-Gilford progeria syndrome. This protein has 4 isoforms produced by alternative splicing with the molecular weight of 74 kDa, 65 kDa, 70 kDa and 64 kDa. This antibody can recognize 4 isoforms of Lamin A/C.

Applications

Tested applications:	ELISA, IP, FC, IF, WB
Cited applications:	WB
Species specificity:	Human, Mouse, Rat; other species not tested.
Cited species:	Duck, human, mouse, rat
Calculated Lamin A/C MW:	65 kDa
Observed Lamin A/C MW:	65 kDa, 70 kDa
Positive WB detected in	NIH/3T3 cells, A375 cells, C6 cells, HEK-293 cells, HeLa cells, mouse heart tissue, mouse ovary tissue, SKOV-3 cells
Positive IP detected in	A375 cells
Positive IF detected in	HepG2 cells
Positive FC detected in	HEK-293T cells
Recommended dilution:	WB: 1:1000-1:10000 IP: 1:500-1:5000 IF: 1:20-1:200 FC: N/A

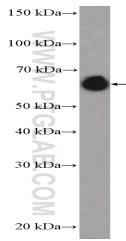
Application key: WB = Western blotting, IHC = Immunohistochemistry, IF = Immunofluorescence, IP = Immunoprecipitation

Immunogen information

Immunogen:	Ag0408
GenBank accession number:	BC003162
Gene ID (NCBI):	4000
Full name:	Lamin A/C

Product information

Purification method:	Antigen affinity purification
Storage:	PBS with 0.1% sodium azide and 50% glycerol pH 7.3. Store at -20°C.



NIH/3T3 cells were subjected to SDS PAGE followed by western blot with 10298-1-AP(Lamin A/C Antibody) at dilution of 1:3000