

CTNNB1 Polyclonal Antibody

Catalog number: 13665-1-AP

Size: 24 µg/150 µl

Source: Rabbit

Isotype: IgG

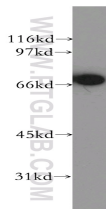
Synonyms:

CTNNB1; Beta catenin like protein 1, C20orf33, catenin, beta like 1, CTNNB1, dJ633O20.1, FLJ21108, NAP, Nuclear associated protein, NYD SP19, P14L, PP8304

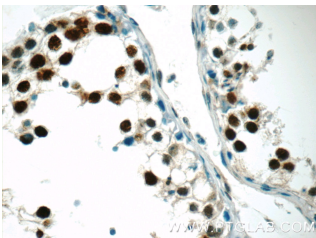
Applications

Tested applications:	ELISA, WB, IHC
Species specificity:	Human, Mouse, Rat; other species not tested.
Calculated CTNNB1 MW:	563aa, 65 kDa
Observed CTNNB1 MW:	65kd
Positive WB detected in	Jurkat cells, mouse spleen tissue, mouse thymus tissue
Positive IHC detected in	Human testis tissue
Recommended dilution:	WB: 1:500-1:5000 IHC: 1:20-1:200

Application key: WB = Western blotting, IHC = Immunohistochemistry, IF = Immunofluorescence, IP = Immunoprecipitation



Jurkat cells were subjected to SDS PAGE followed by western blot with 13665-1-AP (CTNNB1 antibody) at dilution of 1:500



Immunohistochemistry of paraffin-embedded human testis tissue slide using 13665-1-AP (CTNNB1 Antibody) at dilution of 1:50 (under 40x lens)

Immunogen information

Immunogen:	Ag4578
GenBank accession number:	BC036739
Gene ID (NCBI):	56259
Full name:	Catenin, beta like 1

Product information

Purification method:	Antigen affinity purification
Storage:	PBS with 0.02% sodium azide and 50% glycerol pH 7.3. Store at -20°C.