

CREB3 Polyclonal Antibody

Catalog number: 11275-1-AP

Size: 22 µg/150 µl

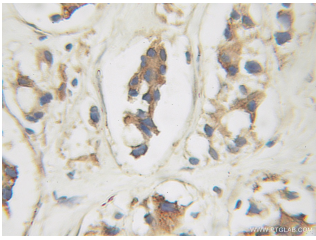
Source: Rabbit

Isotype: IgG

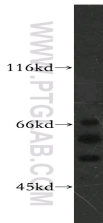
Synonyms:

CREB3; CREB 3, CREB3,

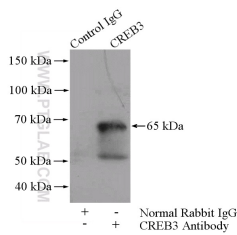
LUMAN, LZIP



Immunohistochemical of paraffin-embedded human prostate cancer using 11275-1-AP (CREB3 antibody) at dilution of 1:100 (under 25x lens)



PC-3 cells were subjected to SDS PAGE followed by western blot with 11275-1-AP (CREB3 antibody) at dilution of 1:300



IP Result of anti-CREB3 (IP:11275-1-AP, 4µg; Detection:11275-1-AP 1:500) with P C-3 cells lysate 1800µg.

Background

CREB3, also named as LZIP and Luman, belongs to the bZIP family and ATF subfamily. It is a transcription factors activated upon intramembrane proteolysis (RIP), binds the cAMP response element (CRE) (consensus: 5'-GTGACGT[AG][AG]-3'), a sequence present in many viral and cellular promoters. CREB3 binds to and requires HCFC1 as a coactivator. The activity and expression are suppressed when the HCFC1-CREB3 complex binds with CREBZF. Participates in LKN-1/CCL15-induced chemotaxis signaling. CREB3 is N-glycosylated and released by proteolysis. So the MW of CREB3 emirate 40kd to 64kd.

Applications

Tested applications:	ELISA, WB, IHC, IP
Cited applications:	IP, WB
Species specificity:	Human; other species not tested.
Cited species:	Human
Calculated CREB3 MW:	44 kDa
Observed CREB3 MW:	40-64kd
Positive WB detected in	PC-3 cells, Jurkat cells
Positive IP detected in	PC-3 cells
Positive IHC detected in	Human prostate cancer tissue
Recommended dilution:	WB: 1:200-1:2000
	IP: 1:200-1:2000
	IHC: 1:20-1:200

Application key: WB = Western blotting, IHC = Immunohistochemistry, IF = Immunofluorescence, IP = Immunoprecipitation

Immunogen information

Immunogen:	Ag1823
GenBank accession number:	BC009402
Gene ID (NCBI):	10488
Full name:	CAMP responsive element binding protein 3

Product information

Purification method:	Antigen affinity purification
Storage:	PBS with 0.02% sodium azide and 50% glycerol pH 7.3. Store at -20°C.