

p38 Polyclonal Antibody

Catalog number: 14064-1-AP

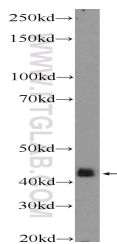
Size: 24 µg/150 µl

Source: Rabbit

Isotype: IgG

Synonyms:

MAPK14; CSAID binding protein, CSBP, CSBP1, CSBP2, CSPB1, EXIP, MAP kinase 14, MAP kinase MXI2, MAP kinase p38 alpha, MAPK 14, MAPK14, MAX interacting protein 2, Mxi2, p38, p38ALPHA, PRKM14, PRKM15, RK, SAPK2A



mouse heart tissue were subjected to SDS PAGE followed by western blot with 14064-1-AP(p38 MAPK Antibody) at dilution of 1:600

Background

MAPK14(mitogen-activated protein kinase 14) is also named as SAPK2A, p38MAPK, CSBP1, RK, p38, EXIP, Mxi2, CSBP2, PRKM14, PRKM15, CSPB1, p38ALPHA and belongs to the MAP kinase subfamily. MAPK14-signaling is a central pathway for the integration of instructive signals in dendritic cells for T(H)17 differentiation and inflammation(PMID:22231518). It plays an important role in the regulation of hematopoietic stem cellself-renewal in vitro and inhibition of MAPK14 activation with a small molecule inhibitor may represent a novel approach to promote ex vivo expansion of hematopoietic stem cell(PMID:21198398). This protein has 4 isoforms produced by alternative splicing.

Applications

Tested applications:	ELISA, WB
Cited applications:	IHC, WB
Species specificity:	Human,Mouse,Rat; other species not tested.
Cited species:	Human, mouse, rat
Calculated p38 MW:	360aa,41 kDa
Observed p38 MW:	35 kDa,41 kDa
Positive WB detected in	Mouse heart tissue, rat heart tissue
Recommended dilution:	WB: 1:200-1:2000

Application key: WB = Western blotting, IHC = Immunohistochemistry, IF = Immunofluorescence, IP = Immunoprecipitation

Immunogen information

Immunogen:	Ag5115
GenBank accession number:	BC031574
Gene ID (NCBI):	1432
Full name:	Mitogen-activated protein kinase 14

Product information

Purification method:	Antigen affinity purification
Storage:	PBS with 0.1% sodium azide and 50% glycerol pH 7.3. Store at -20°C.