

NAPB Polyclonal Antibody

Catalog number: 14106-1-AP

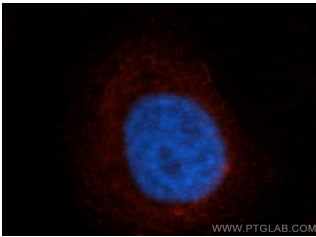
Size: 25 µg/150 µl

Source: Rabbit

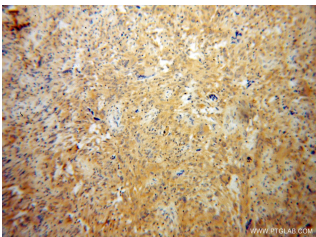
Isotype: IgG

Synonyms:

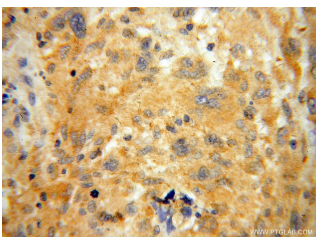
NAPB; beta SNAP, NAPB,
SNAP BETA, SNAPB



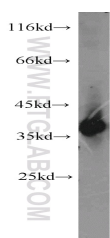
Immunofluorescent analysis of HepG2 cells, using NAPB antibody 14106-1-AP at 1:50 dilution and Rhodamine-labeled goat anti-rabbit IgG (red). Blue pseudocolor = DAPI (fluorescent DNA dye).



Immunohistochemical of paraffin-embedded human gliomas using 14106-1-AP (NAPB antibody) at dilution of 1:100 (under 10x lens)



Immunohistochemical of paraffin-embedded human gliomas using 14106-1-AP (NAPB antibody) at dilution of 1:100 (under 40x lens)



mouse brain tissue were subjected to SDS PAGE

Applications

Tested applications:	ELISA, WB, IHC, IF, IP
Species specificity:	Human, Mouse, Rat; other species not tested.
Calculated NAPB MW:	298aa, 34 kDa
Observed NAPB MW:	35-38 kDa
Positive WB detected in	Mouse brain tissue
Positive IP detected in	Mouse brain tissue
Positive IHC detected in	Human gliomas tissue
Positive IF detected in	HepG2 cells
Recommended dilution:	WB: 1:500-1:5000 IP: 1:500-1:5000 IHC: 1:20-1:200 IF: 1:20-1:200

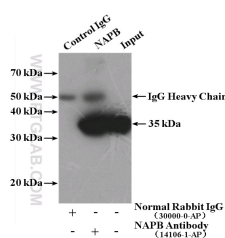
Application key: WB = Western blotting, IHC = Immunohistochemistry, IF = Immunofluorescence, IP = Immunoprecipitation

Immunogen information

Immunogen:	Ag5239
GenBank accession number:	BC060840
Gene ID (NCBI):	63908
Full name:	N-ethylmaleimide-sensitive factor attachment protein, beta

Product information

Purification method:	Antigen affinity purification
Storage:	PBS with 0.02% sodium azide and 50% glycerol pH 7.3. Store at -20°C.



IP Result of anti-NAPB
(IP: 14106-1-AP, 4 µg)

followed by western blot with Detection:14106-1-AP 1:1000)
14106-1-AP(NAPB antibody) with mouse brain tissue lysate
at dilution of 1:1200 4000ug.