

FHL1 Polyclonal Antibody

Catalog number: 10991-1-AP

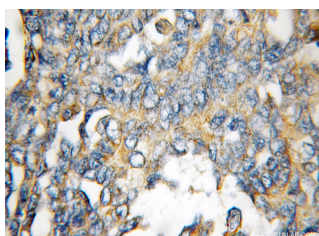
Size: 20 µg/150 µl

Source: Rabbit

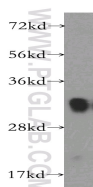
Isotype: IgG

Synonyms:

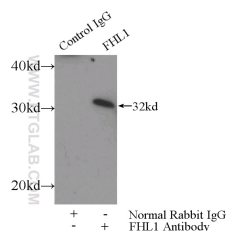
FHL1; bA535K18.1, FHL 1, FHL1, FHL1B, FLH1A, four and a half LIM domains 1, KYO T, Skeletal muscle LIM protein 1, SLIM, SLIM 1, SLIM1, XMPMA



Immunohistochemical of paraffin-embedded human ovary tumor using 10991-1-AP(FHL1 antibody) at dilution of 1:100 (under 10x lens)



human brain tissue were subjected to SDS PAGE followed by western blot with 10991-1-AP(FHL1 antibody) at dilution of 1:1000



IP Result of anti-FHL1 (IP:10991-1-AP, 3ug; Detection:10991-1-AP 1:700) with mouse skeletal muscle tissue lysate 3600ug.

Background

Four-and-a-half LIM domains 1 (FHL1), a member of the FHL protein family, which composed of FHL 1, 2, 3, 4 and ACT (activator of CREM), and characterized by an N-terminal half LIM domain followed by four complete LIM domains. FHL1 may contribute to sarcomere synthesis, assembly and biomechanical stress sensing. FHL1 is also a methylation-silenced tumor-suppressor gene on chromosome X in gastrointestinal cancers, which contributes to the formation of an epigenetic field for cancerization. FHL1(10991-1-AP) is highly expressed in skeletal muscle and to a lesser extent in heart, placenta, ovary, prostate, testis, small intestine, colon and spleen. This is a rabbit polyanitbody raised against full length of human FHL1.

Applications

| | |
|--------------------------|--|
| Tested applications: | ELISA, WB, IHC, IP |
| Cited applications: | ChIP, CoIP, IHC, WB |
| Species specificity: | Human, Mouse, Zebrafish; other species not tested. |
| Cited species: | Human, mouse, zebrafish |
| Calculated FHL1 MW: | 32 kDa |
| Observed FHL1 MW: | 32 kDa |
| Positive WB detected in | Human brain tissue, mouse colon tissue, mouse skeletal muscle tissue |
| Positive IP detected in | Mouse skeletal muscle tissue |
| Positive IHC detected in | Human ovary tumor tissue |
| Recommended dilution: | WB: 1:500-1:5000 IP: 1:200-1:2000 IHC: 1:20-1:200 |

Application key: WB = Western blotting, IHC = Immunohistochemistry, IF = Immunofluorescence, IP = Immunoprecipitation

Immunogen information

| | |
|---------------------------|-------------------------------|
| Immunogen: | Ag1448 |
| GenBank accession number: | BC010998 |
| Gene ID (NCBI): | 2273 |
| Full name: | Four and a half LIM domains 1 |

Product information

| | |
|----------------------|---|
| Purification method: | Antigen affinity purification |
| Storage: | PBS with 0.1% sodium azide and 50% glycerol pH 7.3. Store at -20°C. |