

PDGFD Polyclonal Antibody

Catalog number: 14075-1-AP

Size: 45 µg/150 µl

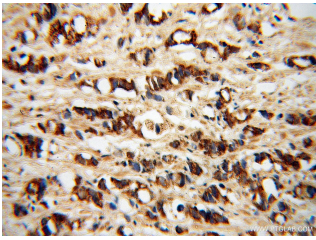
Source: Rabbit

Isotype: IgG

Synonyms:

PDGFD; IEGF; MGC26867;

MSTP036; SCDGF-B; SCDGFB



Immunohistochemistry of paraffin-embedded human prostate cancer using 14075-1-AP (PDGFD Antibody) at Dilution 1:50 (under 40x lens)

Applications

Tested applications:	ELISA, IHC
Species specificity:	Human, mouse, rat; other species not tested.
Calculated PDGFD MW:	43kd
Observed PDGFD MW:	
Positive IHC detected in:	Human prostate cancer
Recommended dilution:	IHC: 1:20-1:200

Application key: WB = Western blotting, IHC = Immunohistochemistry, IF = Immunofluorescence, IP = Immunoprecipitation, FC = Flow cytometry

Immunogen information

Immunogen:	Ag5154
GenBank accession number:	BC030645
Gene ID (NCBI):	80310
Full name:	Platelet derived growth factor D

Product information

Purification method:	Antigen affinity purification
Storage:	PBS with 0.02% sodium azide and 50% glycerol pH 7.3. Store at -20°C.