

## SNCB Polyclonal Antibody

Catalog number: 10498-1-AP

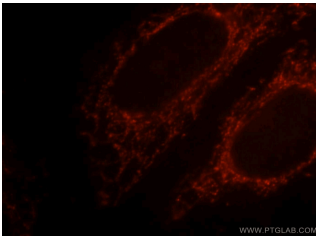
Size: 22 µg/150 µl

Source: Rabbit

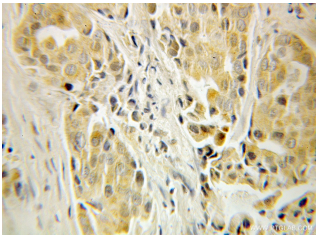
Isotype: IgG

Synonyms:

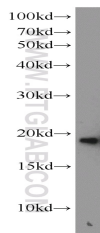
SNCB; Beta synuclein, SNCB, synuclein, beta



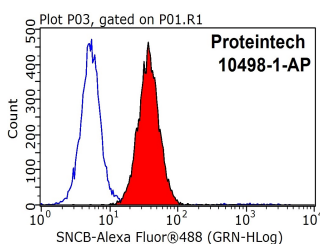
Immunofluorescent analysis of HepG2 cells, using SNCB antibody 10498-1-AP at 1:25 dilution and Rhodamine-labeled goat anti-rabbit IgG (red).



Immunohistochemical of paraffin-embedded human breast cancer using 10498-1-AP(SNCB antibody) at dilution of 1:10 (under 10x lens)



mouse brain tissue were subjected to SDS PAGE followed by western blot with 10498-1-AP(SNCB antibody) at dilution of 1:600



1X10<sup>6</sup> HepG2 cells were stained with 0.2µg SNCB antibody (10498-1-AP, red)

### Applications

Tested applications:	ELISA, WB, IHC, IF, FC
Species specificity:	Human, Mouse, Rat; other species not tested.
Calculated SNCB MW:	14 kDa
Observed SNCB MW:	14-18kd
Positive WB detected in	Mouse brain tissue, human brain tissue, rat brain tissue
Positive IHC detected in	Human breast cancer tissue
Positive IF detected in	HepG2 cells
Positive FC detected in	HepG2 cells
Recommended dilution:	WB: 1:200-1:2000 IHC: 1:10-1:100 IF: 1:10-1:100 FC: N/A

Application key: WB = Western blotting, IHC = Immunohistochemistry, IF = Immunofluorescence, IP = Immunoprecipitation

### Immunogen information

Immunogen:	Ag0772
GenBank accession number:	BC002902
Gene ID (NCBI):	6620
Full name:	Synuclein, beta

### Product information

Purification method:	Antigen affinity purification
Storage:	PBS with 0.1% sodium azide and 50% glycerol pH 7.3. Store at -20°C.

and control antibody (blue).  
Fixed with 90% MeOH  
blocked with 3% BSA (30  
min). Alexa Fluor 488-  
conjugated AffiniPure Goat  
Anti-Rabbit IgG(H+L) with  
dilution 1:1000.