

## WTAP Polyclonal Antibody

Catalog number: 10200-1-AP

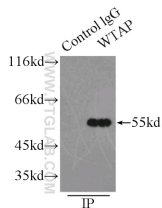
Size: 30 µg/150 µl

Source: Rabbit

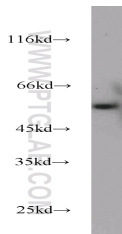
Isotype: IgG

Synonyms:

WTAP; DKFZp686F20131,  
Female lethal(2)D homolog,  
hFL(2)D, KIAA0105, WT1  
associated protein, WTAP



IP Result of anti-WTAP (IP:10200-1-AP, 3µg; Detection:10200-1-AP 1:500) with HEK-293 cells lysate 2500µg.



Jurkat cells were subjected to SDS PAGE followed by western blot with 10200-1-AP(WTAP antibody) at dilution of 1:1000

### Background

WTAP, also named as KIAA0105 and hFL(2)D, is previously identified as a protein associated with Wilms' tumor-1 (WT-1) protein that is essential for the development of the genitourinary system. It is a Pre-mRNA-splicing regulator protein. It is a regulatory subunit of the WMM N6-methyltransferase complex which plays a role in the efficiency of mRNA splicing and processing and mRNA stability. It is required for accumulation of METTL3 and METTL14 to nuclear speckle.

### Applications

Tested applications:	ELISA, IP, WB
Species specificity:	Human, Mouse, Rat; other species not tested.
Calculated WTAP MW:	45 kDa
Observed WTAP MW:	50-55kd
Positive WB detected in	Jurkat cells, HEK-293 cells, L02 cells, MCF7 cells
Positive IP detected in	HEK-293 cells
Recommended dilution:	WB: 1:500-1:5000 IP: 1:200-1:2000

Application key: WB = Western blotting, IHC = Immunohistochemistry, IF = Immunofluorescence, IP = Immunoprecipitation

### Immunogen information

Immunogen:	Ag0259
GenBank accession number:	BC000383
Gene ID (NCBI):	9589
Full name:	Wilms tumor 1 associated protein

### Product information

Purification method:	Antigen affinity purification
Storage:	PBS with 0.1% sodium azide and 50% glycerol pH 7.3. Store at -20°C.