

SLC30A6 Polyclonal Antibody

Catalog number: 13526-1-AP

Size: 41 µg/150 µl

Source: Rabbit

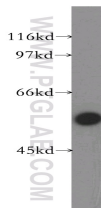
Isotype: IgG

Synonyms:

SLC30A6; FLJ31101, MST103,

MSTP103, SLC30A6, Zinc

transporter 6, ZnT 6, ZNT6



A375 cells were subjected to SDS PAGE followed by western blot with 13526-1-AP (SLC30A6 antibody) at dilution of 1:500

Applications

Tested applications:	ELISA, WB
Cited applications:	IF, IHC, WB
Species specificity:	Human; other species not tested.
Cited species:	Human, mouse
Calculated SLC30A6 MW:	460aa, 50 kDa
Observed SLC30A6 MW:	51 kDa
Positive WB detected in	A375 cells, K-562 cells
Recommended dilution:	WB: 1:500-1:5000

Application key: WB = Western blotting, IHC = Immunohistochemistry, IF = Immunofluorescence, IP = Immunoprecipitation

Immunogen information

Immunogen:	Ag4403
GenBank accession number:	BC032525
Gene ID (NCBI):	55676
Full name:	Solute carrier family 30 (zinc transporter), member 6

Product information

Purification method:	Antigen affinity purification
Storage:	PBS with 0.02% sodium azide and 50% glycerol pH 7.3. Store at -20°C.