

ROD1 Polyclonal Antibody

Catalog number: 14027-1-AP

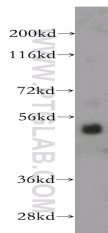
Size: 20 µg/150 µl

Source: Rabbit

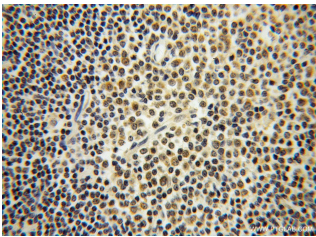
Isotype: IgG

Synonyms:

ROD1; DKFZp781I11117; PTBP3



HL-60 cells were subjected to SDS PAGE followed by western blot with 14027-1-AP(ROD1 Antibody) at dilution of 1:1200



Immunohistochemistry of paraffin-embedded human lymphoma using 14027-1-AP(ROD1 Antibody) at Dilution 1:100 (under 40x lens)

Applications

Tested applications:	ELISA, WB, IHC
Species specificity:	Human, mouse, rat; other species not tested.
Positive WB detected in:	HL-60 cells
Calculated ROD1 MW:	60kd
Observed ROD1 MW:	50kd
Positive IHC detected in:	Human lymphoma
Recommended dilution:	WB: 1:500-1:5000 IHC: 1:50-1:200

Application key: WB = Western blotting, IHC = Immunohistochemistry, IF = Immunofluorescence, IP = Immunoprecipitation, FC = Flow cytometry

Immunogen information

Immunogen:	Ag5172
GenBank accession number:	BC044585
Gene ID (NCBI):	9991
Full name:	ROD1 regulator of differentiation 1 (S. pombe)

Product information

Purification method:	Antigen affinity purification
Storage:	PBS with 0.02% sodium azide and 50% glycerol pH 7.3. Store at -20°C.