

CREB3L4 Polyclonal Antibody

Catalog number: 13630-1-AP

Size: 20 µg/150 µl

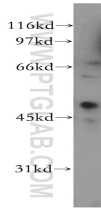
Source: Rabbit

Isotype: IgG

Synonyms:

CREB3L4; AIBZIP; ATCE1;

CREB3; CREB4; JAL; hJAL



HL-60 cells were subjected to SDS PAGE followed by western blot with 13630-1-AP (CREB3L4 Antibody) at dilution of 1:800

Applications

Tested applications:	ELISA, WB
Species specificity:	Human; other species not tested.
Positive WB detected in:	HL-60 cells
Calculated CREB3L4 MW:	395aa, 43kd
Observed CREB3L4 MW:	50kd
Recommended dilution:	WB: 1:200-1:2000

Application key: WB = Western blotting, IHC = Immunohistochemistry, IF = Immunofluorescence, IP = Immunoprecipitation, FC = Flow cytometry

Immunogen information

Immunogen:	Ag4548
GenBank accession number:	BC038962
Gene ID (NCBI):	148327
Full name:	CAMP responsive element binding protein 3-like 4

Product information

Purification method:	Antigen affinity purification
Storage:	PBS with 0.02% sodium azide and 50% glycerol pH 7.3. Store at -20°C.