

SAP130 Polyclonal Antibody

Catalog number: 12130-1-AP

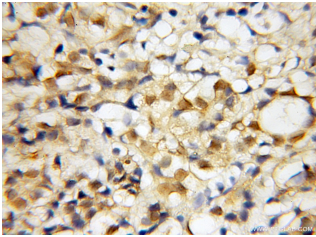
Size: 20 µg/150 µl

Source: Rabbit

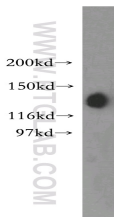
Isotype: IgG

Synonyms:

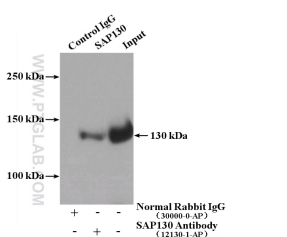
SAP130; FLJ12761, SAP130



Immunohistochemical of paraffin-embedded human pancreas cancer using 12130-1-AP(SAP130 antibody) at dilution of 1:50 (under 10x lens)



HEK-293 cells were subjected to SDS PAGE followed by western blot with 12130-1-AP(SAP130 antibody) at dilution of 1:400



IP Result of anti-SAP130 (IP:12130-1-AP, 4µg; Detection:12130-1-AP 1:600) with HepG2 cells lysate 1000µg.

Applications

Tested applications:	ELISA, WB, IHC, IP
Species specificity:	Human, Mouse, Rat; other species not tested.
Calculated SAP130 MW:	110 kDa
Observed SAP130 MW:	130 kDa
Positive WB detected in	HEK-293 cells, HeLa cells, HepG2 cells, Jurkat cells, K-562 cells
Positive IP detected in	HepG2 cells
Positive IHC detected in	Human pancreas cancer tissue
Recommended dilution:	WB: 1:500-1:5000 IP: 1:200-1:2000 IHC: 1:20-1:200

Application key: WB = Western blotting, IHC = Immunohistochemistry, IF = Immunofluorescence, IP = Immunoprecipitation

Immunogen information

Immunogen:	Ag2774
GenBank accession number:	BC017453
Gene ID (NCBI):	79595
Full name:	Sin3A-associated protein, 130kDa

Product information

Purification method:	Antigen affinity purification
Storage:	PBS with 0.02% sodium azide and 50% glycerol pH 7.3. Store at -20°C.