

MCC Polyclonal Antibody

Catalog number: 11525-1-AP

Size: 41 µg/150 µl

Source: Rabbit

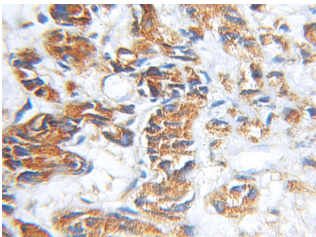
Isotype: IgG

Synonyms:

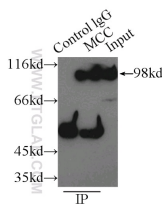
MCC; DKFZp762O1615,

FLJ38893, FLJ46755, MCC,

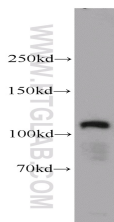
MCC1, mutated in colorectal cancers, Protein MCC



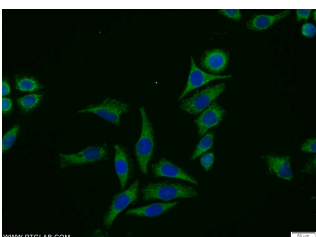
Immunohistochemical of paraffin-embedded human prostate cancer using 11525-1-AP(MCC antibody) at dilution of 1:100 (under 10x lens)



IP Result of anti-MCC (IP:11525-1-AP, 3µg; Detection:11525-1-AP 1:500) with PC-3 cells lysate 5000µg.



human brain tissue were subjected to SDS PAGE followed by western blot with 11525-1-AP(MCC antibody) at dilution of 1:500



Immunofluorescent analysis of PC-3 cells using 11525-1-

Background

MCC (mutated in colorectal cancers) gene been previously been identified by virtue of its mutation in human colorectal tumors. As a candidate for the putative colorectal tumor suppressor gene located at 5q21, MCC protein suppresses cell proliferation and the Wnt/b-catenin pathway in colorectal cancer cells. In addition, MCC is involved in cell migration via binding with Scrib and b-catenin,

Applications

Tested applications:	ELISA, IHC, IP, WB, IF
Cited applications:	IHC, WB
Species specificity:	Human, Mouse; other species not tested.
Cited species:	Human, mouse
Calculated MCC MW:	829aa,93 kDa
Observed MCC MW:	98 kDa; 113-118 kDa
Positive WB detected in	Human brain tissue, COLO 320 cells, mouse liver tissue, PC-3 cells
Positive IP detected in	PC-3 cells
Positive IHC detected in	Human prostate cancer tissue
Positive IF detected in	PC-3 cells
Recommended dilution:	WB: 1:200-1:2000 IP: 1:200-1:2000 IHC: 1:20-1:200 IF: 1:10-1:100

Application key: WB = Western blotting, IHC = Immunohistochemistry, IF = Immunofluorescence, IP = Immunoprecipitation

Immunogen information

Immunogen:	Ag2089
GenBank accession number:	BC018919
Gene ID (NCBI):	4163
Full name:	Mutated in colorectal cancers

Product information

Purification method:	Antigen affinity purification
Storage:	PBS with 0.1% sodium azide and 50% glycerol pH 7.3. Store at -20°C.

**AP(MCC Antibody) at
dilution of 1:25 and Alexa
Fluor 488-conjugated
AffiniPure Goat Anti-Rabbit
IgG(H+L)**