

LENG8 Polyclonal Antibody

Catalog number: 13336-1-AP

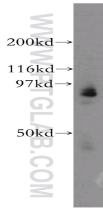
Size: 76 µg/150 µl

Source: Rabbit

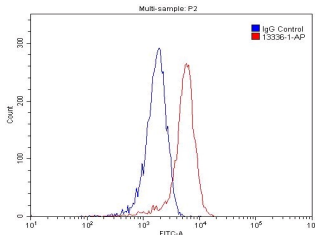
Isotype: IgG

Synonyms:

LENG8; KIAA1932, LENG8,
pp13842



A2780 cells were subjected to SDS PAGE followed by western blot with 13336-1-AP (LENG8 antibody) at dilution of 1:1200



1X10⁶ HEK-293 cells were stained with 0.2 µg LENG8 antibody (13336-1-AP, red) and control antibody (blue). Fixed with 4% PFA blocked with 3% BSA (30 min). Alexa Fluor 488-conjugated AffiniPure Goat Anti-Rabbit IgG(H+L) with dilution 1:1500.

Applications

Tested applications:	ELISA, WB, FC
Species specificity:	Human, Mouse, Rat; other species not tested.
Calculated LENG8 MW:	800aa, 88 kDa
Observed LENG8 MW:	88 kDa
Positive WB detected in:	A2780 cells
Positive FC detected in:	HEK-293 cells
Recommended dilution:	WB: 1:500-1:5000 FC: N/A

Application key: WB = Western blotting, IHC = Immunohistochemistry, IF = Immunofluorescence, IP = Immunoprecipitation

Immunogen information

Immunogen:	Ag4153
GenBank accession number:	BC028048
Gene ID (NCBI):	114823
Full name:	Leukocyte receptor cluster (LRC) member 8

Product information

Purification method:	Antigen affinity purification
Storage:	PBS with 0.02% sodium azide and 50% glycerol pH 7.3. Store at -20°C.