

GYG2 Polyclonal Antibody

Catalog number: 13150-1-AP

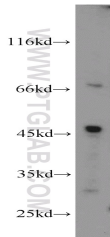
Size: 20 µg/150 µl

Source: Rabbit

Isotype: IgG

Synonyms:

GYG2; GN-2; GN2



L02 cells were subjected to SDS PAGE followed by western blot with 13150-1-AP (GYG2 Antibody) at dilution of 1:500

Background

GYG2 belongs to the glycogenin family. Glycogenin is a self-glycosylating protein involved in the initiation phase of glycogen biosynthesis. Multiple alternatively spliced transcript variants encoding different isoforms have been identified, including the predominant band around 66kD and a light band around 45kD.

Applications

Tested applications:	ELISA, WB
Species specificity:	Human; other species not tested.
Positive WB detected in:	L02 cells, HEK-293 cells, human liver tissue
Calculated GYG2 MW:	501aa, 55kd
Observed GYG2 MW:	45 kDa, 66-70kDa
Recommended dilution:	WB: 1:200-1:2000

Application key: WB = Western blotting, IHC = Immunohistochemistry, IF = Immunofluorescence, IP = Immunoprecipitation, FC = Flow cytometry

Immunogen information

Immunogen:	Ag3765
GenBank accession number:	BC023152
Gene ID (NCBI):	8908
Full name:	Glycogenin 2

Product information

Purification method:	Antigen affinity purification
Storage:	PBS with 0.1% sodium azide and 50% glycerol pH 7.3. Store at -20°C.