

## CDK5 Polyclonal Antibody

Catalog number: 10430-1-AP

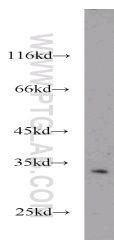
Size: 150 µg/150 µl

Source: Rabbit

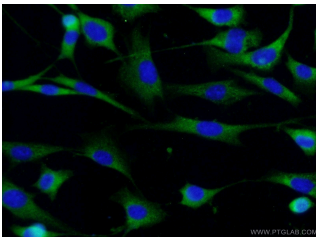
Isotype: IgG

Synonyms:

CDK5; CDK5, Cell division protein kinase 5, cyclin dependent kinase 5, PSSALRE, TPKII catalytic subunit



NIH/3T3 cells were subjected to SDS PAGE followed by western blot with 10430-1-AP (CDK5 antibody) at dilution of 1:500



Immunofluorescent analysis of ( -20 Ethanol ) fixed NIH/3T3 cells using 10430-1-AP ( CDK5 Antibody ) at dilution of 1:50 and Alexa Fluor 488-conjugated AffiniPure Goat Anti-Rabbit IgG(H+L)

### Background

Cyclin-dependent kinase 5 (CDK5), belongs to the cyclin-dependent kinase family, is a proline-directed serine/threonine-protein kinase that essential for neuronal cell cycle arrest and differentiation and may be involved in apoptotic cell death in neuronal diseases by triggering abortive cell cycle re-entry. CDK5 predominantly expressed in neurons where it phosphorylates both high molecular weight neurofilaments and microtubule-associated protein tau.

### Applications

<b>Tested applications:</b>	ELISA, WB, IF
<b>Cited applications:</b>	WB
<b>Species specificity:</b>	Human, Mouse, Rat; other species not tested.
<b>Cited species:</b>	Mouse
<b>Calculated CDK5 MW:</b>	31 kDa or 33 kDa
<b>Observed CDK5 MW:</b>	33 kDa
<b>Positive WB detected in</b>	NIH/3T3 cells, mouse pancreas tissue
<b>Positive IF detected in</b>	NIH/3T3 cells
<b>Recommended dilution:</b>	WB: 1:200-1:2000 IF: 1:20-1:200

Application key: WB = Western blotting, IHC = Immunohistochemistry, IF = Immunofluorescence, IP = Immunoprecipitation

### Immunogen information

<b>Immunogen:</b>	Ag0686
<b>GenBank accession number:</b>	BC005115
<b>Gene ID (NCBI):</b>	1020
<b>Full name:</b>	Cyclin-dependent kinase 5

### Product information

<b>Purification method:</b>	Antigen affinity purification
<b>Storage:</b>	PBS with 0.1% sodium azide and 50% glycerol pH 7.3. Store at -20°C.