

MEK6 Polyclonal Antibody

Catalog number: 12745-1-AP

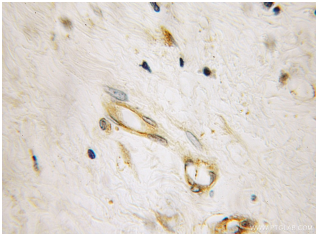
Size: 31 µg/150 µl

Source: Rabbit

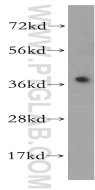
Isotype: IgG

Synonyms:

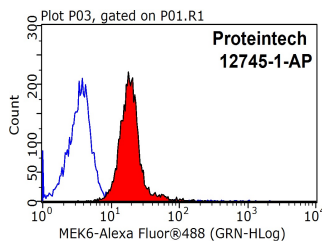
MAP2K6; MAP kinase kinase 6,
MAP2K6, MAPK/ERK kinase 6,
MAPKK 6, MAPKK6, MEK 6,
MEK6, MKK6, PRKMK6,
SAPKK3



Immunohistochemical of paraffin-embedded human breast cancer using 12745-1-AP (MAP2K6 antibody) at dilution of 1:100 (under 10x lens)



human kidney tissue were subjected to SDS PAGE followed by western blot with 12745-1-AP (MAP2K6 antibody) at dilution of 1:500



1X10⁶ MCF-7 cells were stained with 0.2 µg MAP2K6 antibody (12745-1-AP, red) and control antibody (blue). Fixed with 90% MeOH blocked with 3% BSA (30 min). Alexa Fluor 488-conjugated AffiniPure Goat Anti-Rabbit IgG(H+L) with dilution 1:1500.

Applications

Tested applications:	ELISA, WB, IHC, FC
Species specificity:	Human, Mouse, Rat; other species not tested.
Calculated MEK6 MW:	334aa, 37 kDa
Observed MEK6 MW:	37kd
Positive WB detected in:	Human kidney tissue
Positive IHC detected in:	Human breast cancer tissue
Positive FC detected in:	MCF-7 cells
Recommended dilution:	WB: 1:500-1:5000 IHC: 1:20-1:200 FC: N/A

Application key: WB = Western blotting, IHC = Immunohistochemistry, IF = Immunofluorescence, IP = Immunoprecipitation

Immunogen information

Immunogen:	Ag3706
GenBank accession number:	BC012009
Gene ID (NCBI):	5608
Full name:	Mitogen-activated protein kinase kinase 6

Product information

Purification method:	Antigen affinity purification
Storage:	PBS with 0.1% sodium azide and 50% glycerol pH 7.3. Store at -20°C.