

MTPN Polyclonal Antibody

Catalog number: 13508-1-AP

Size: 67 µg/150 µl

Source: Rabbit

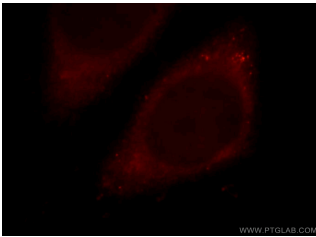
Isotype: IgG

Synonyms:

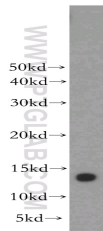
MTPN; FLJ31098, FLJ99857,

GCDP, MTPN, myotrophin,

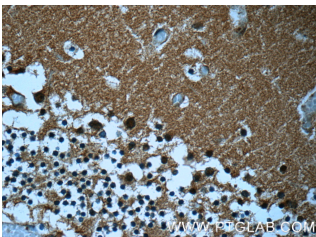
Protein V 1, V 1



Immunofluorescent analysis of HepG2 cells, using MTPN antibody 13508-1-AP at 1:25 dilution and Rhodamine-labeled goat anti-rabbit IgG (red).



HeLa cells were subjected to SDS PAGE followed by western blot with 13508-1-AP(MTPN antibody) at dilution of 1:300



Immunohistochemistry of paraffin-embedded human cerebellum tissue slide using 13508-1-AP(MTPN Antibody) at dilution of 1:50 (under 40x lens)

Applications

Tested applications:	ELISA, WB, IF, IHC
Species specificity:	Human,Mouse,Rat; other species not tested.
Calculated MTPN MW:	118aa,13kd
Observed MTPN MW:	12kd
Positive WB detected in	HeLa cells, HEK-293 cells, human brain tissue, human heart tissue, MCF7 cells
Positive IHC detected in	Human cerebellum tissue, human heart tissue
Positive IF detected in	HepG2 cells, Hela cells
Recommended dilution:	WB: 1:500-1:5000
	IHC: 1:20-1:200
	IF: 1:10-1:100

Application key: WB = Western blotting, IHC = Immunohistochemistry, IF = Immunofluorescence, IP = Immunoprecipitation

Immunogen information

Immunogen:	Ag4419
GenBank accession number:	BC028093
Gene ID (NCBI):	136319
Full name:	Myotrophin

Product information

Purification method:	Antigen affinity purification
Storage:	PBS with 0.02% sodium azide and 50% glycerol pH 7.3. Store at -20°C.