

## Rift Valley Fever MP12 Antibody:

**Catalog #:** 04-0001

**Immunogen:** Sucrose purified virus from infected supernatant; RVFV MP12

**Description:** Rabbit polyclonal for RVFV MP12

**Raised in:** New Zealand White Rabbits

**Purification:** Protein A

**Clonality:** Polyclonal

**Buffer:** PBS + 0.01% Azide

**Size:** 0.5mg

### Relevance:

MP12 represents a surrogate strain for the Category A (NIAID) and USDA/HHS Select Agent Rift Valley Fever.

### Recommended Dilutions:

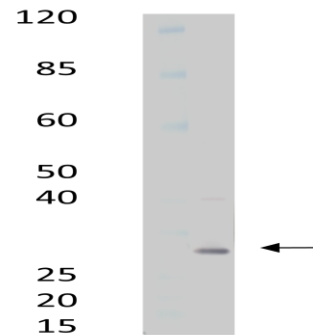
ELISA: Assay-dependent dilution

WB: Assay-dependent dilution. If probing against purified infected cell supernatant, cross-adsorption recommended.

IF: No Data

### Species Reactivity:

Does not react with Venezuelan Equine Encephalitis TC-83, Chikungunya 181/25, Vaccinia NYCBOH, or Junin Candid #1. Some cross-reactivity observed Vero cells



-Serum tested against sucrose purified infected cell-supernatant  
 -Serum diluted to 1ug/mL and incubated with 2% FBS for 2hr  
 Prior to blotting

**Intended for research use only, not for human, therapeutic, or diagnostic applications.**  
*The buyer cannot sell or otherwise transfer this product for Commercial Purposes without written approval of Integrated BioTherapeutics, Inc.*  
**Copyright 2014. Integrated BioTherapeutics, Inc. All rights reserved.**