

MTMR2 Polyclonal Antibody

Catalog number: 14372-1-AP

Size: 31 µg/150 µl

Source: Rabbit

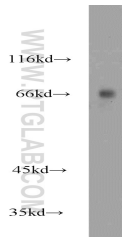
Isotype: IgG

Synonyms:

MTMR2; CMT4B, CMT4B1,

KIAA1073, MTMR2,

myotubularin related protein 2



human cerebellum tissue were subjected to SDS PAGE followed by western blot with 14372-1-AP(MTMR2 antibody) at dilution of 1:1000

Background

MTMR2(myotubularin-related protein 2) is also named as KIAA1073 and belongs to the non-receptor class myotubularin subfamily, which is characterized by the presence of a phosphatase domain. It may regulate vesicular trafficking in Schwann cells(PMID:17880751) and its reversible phosphorylation represents a critical mechanism for regulating the subcellular localization of MTMR2(PMID:21372139). Mtmr2 is a 73 kDa protein in its monomeric form and exist as a dimer within cells and the protein re-localizes to membranes in hypo-osmotic settings(PMID:16399794). Defects in MTMR2 are the cause of Charcot-Marie-Tooth disease type 4B1 (CMT4B1).

Applications

Tested applications:	ELISA, WB
Species specificity:	Human,Mouse,Rat; other species not tested.
Calculated MTMR2 MW:	73kd
Observed MTMR2 MW:	66-68kd
Positive WB detected in	Human cerebellum tissue
Recommended dilution:	WB: 1:500-1:5000

Application key: WB = Western blotting, IHC = Immunohistochemistry, IF = Immunofluorescence, IP = Immunoprecipitation

Immunogen information

Immunogen:	Ag5745
GenBank accession number:	BC052990
Gene ID (NCBI):	8898
Full name:	Myotubularin related protein 2

Product information

Purification method:	Antigen affinity purification
Storage:	PBS with 0.02% sodium azide and 50% glycerol pH 7.3. Store at -20°C.