



4 Research Court, Suite 300  
Rockville, MD 20850  
877-411-2041  
Services@ibtbioservices.com

## Ebola Virus Delta Peptide

**Catalog #:** 0509-001

**Lot #:** 1601006

**Description:** Purified Ebolavirus Delta Peptide.

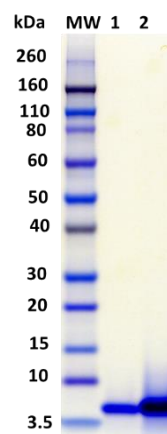
**Storage:** 2-3 weeks at -20°C, -80°C long term.

**Size:** 100 µg of protein is supplied in PBS at a concentration of **0.910 mg/mL**. The theoretical molecular weight of the protein is ~4.7 kDa

**Relevance:** Recombinant protein provides a means for antibody development, control protein for testing, and a tool to enhance research.

**Related Products:** IBT provides a wide array of anti-filovirus specific antibodies and other infectious disease reagents. Please see our website, [www.ibtbioservices.com](http://www.ibtbioservices.com) for more details.

### SDS-PAGE



SDS-PAGE and stain demonstrating 1 µg, 5 µg (lane 1 and 2 respectively) of EBOV delta peptide under denaturing and reducing conditions. MW denotes Novex® Sharp prestained protein markers.

### ELISA Data

EBOV Delta Peptide (ng/well)	OD 650 nm
400.00	3.684
200.00	3.749
100.00	3.547
50.00	3.372
25.00	2.517
12.50	1.480
6.25	0.896
3.13	0.519
1.56	0.318
0.78	0.217
0.39	0.148
0.20	0.114

Plate was coated with EBOV delta peptide starting at 400 ng/well, serially diluted in DPBS. Washed plate was detected using 10 µg/mL of a Rabbit anti-EBOV delta peptide (cat# 0366-001) followed with anti-rabbit IgG-HRP conjugate and TMB substrate. OD<sub>650</sub> is reported.

**Intended for research use only, not for human, therapeutic, or diagnostic applications.**  
The buyer cannot sell or otherwise transfer this product for Commercial Purposes without written approval of Integrated BioTherapeutics, Inc.  
Copyright 2016. Integrated BioTherapeutics, Inc. All rights reserved.