

RBM3 Polyclonal Antibody

Catalog number: 14363-1-AP

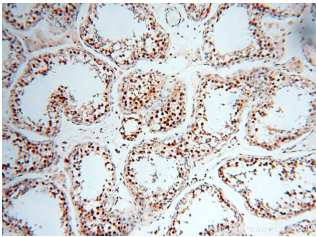
Size: 53 µg/150 µl

Source: Rabbit

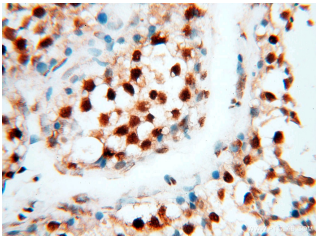
Isotype: IgG

Synonyms:

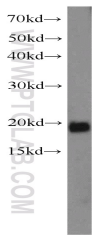
RBM3; IS1 RNPL, Putative RNA binding protein 3, RBM3, RNA binding motif protein 3, RNPL



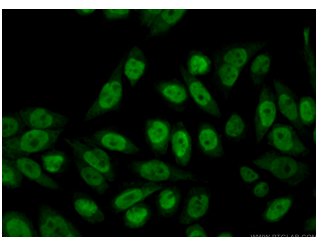
Immunohistochemical of paraffin-embedded human testis using 14363-1-AP(RBM3 antibody) at dilution of 1:50 (under 10x lens)



Immunohistochemical of paraffin-embedded human testis using 14363-1-AP(RBM3 antibody) at dilution of 1:50 (under 40x lens)



HeLa cells were subjected to SDS PAGE followed by western blot with 14363-1-AP(RBM3 antibody) at dilution of 1:500



Immunofluorescent analysis

Background

RBM3, also named as RNPL, is a cold-inducible mRNA binding protein that enhances global protein synthesis at both physiological and mild hypothermic temperatures. It reduces the relative abundance of microRNAs, when overexpressed. RBM3 enhances phosphorylation of translation initiation factors and active polysome formation. It is up-regulated in human tumors. RBM3 is a potential proto-oncogenic proteins upon overexpression. (PMID: 1990510).

Applications

Tested applications:	ELISA, WB, IHC, IP, IF
Cited applications:	IHC, WB
Species specificity:	Human, Mouse, Rat; other species not tested.
Cited species:	Mouse, rat
Calculated RBM3 MW:	17 kDa
Observed RBM3 MW:	17-20 kDa
Positive WB detected in	HeLa cells, A375 cells, HepG2 cells, MCF7 cells, Raji cells
Positive IP detected in	MCF-7 cells
Positive IHC detected in	Human testis tissue, human brain tissue, human colon cancer tissue, human kidney tissue, human lung tissue, human ovary tissue, human skin tissue, human spleen tissue
Positive IF detected in	HeLa cells
Recommended dilution:	WB: 1:200-1:2000 IP: 1:200-1:1000 IHC: 1:20-1:200 IF: 1:20-1:200

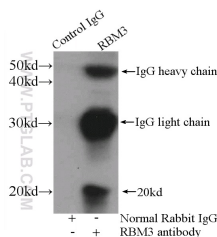
Application key: WB = Western blotting, IHC = Immunohistochemistry, IF = Immunofluorescence, IP = Immunoprecipitation

Immunogen information

Immunogen:	Ag5934
GenBank accession number:	BC006825
Gene ID (NCBI):	5935
Full name:	RNA binding motif (RNP1, RRM) protein 3

Product information

Purification method:	Antigen affinity purification
Storage:	PBS with 0.02% sodium azide and 50% glycerol pH 7.3. Store at -20°C.



IP Result of anti-RBM3

of (10% Formaldehyde) fixed (IP:14363-1-AP, 4ug;
HeLa cells using 14363-1-AP(Detection:14363-1-AP 1:300)
RBM3 Antibody) at dilution with MCF-7 cells lysate
of 1:50 and Alexa Fluor 488- 3200ug.
conjugated AffiniPure Goat
Anti-Rabbit IgG(H+L)