

LIN28 Polyclonal Antibody

Catalog number: 11724-1-AP

Size: 47 µg/150 µl

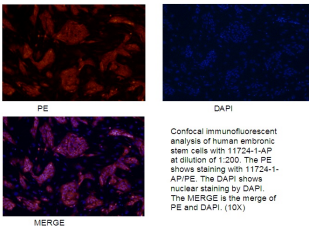
Source: Rabbit

Isotype: IgG

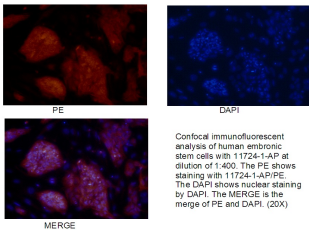
Synonyms:

LIN28; CSDD1, FLJ12457, LIN28, lin 28 homolog (C. elegans),

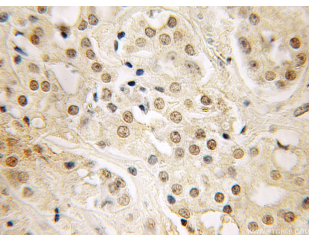
Lin 28A, LIN28, Lin28A, Protein lin 28 homolog A, ZCCHC1



Confocal immunofluorescent analysis of human embryonic stem cells with 11724-1-AP at dilution of 1:200. The PE shows staining with 11724-1-AP/PE. The DAPI shows nuclear staining by DAPI. The MERGE is the merge of PE and DAPI.(10X)



Confocal immunofluorescent analysis of human embryonic stem cells with 11724-1-AP at dilution of 1:400. The PE shows staining with 11724-1-AP/PE. The DAPI shows nuclear staining by DAPI. The MERGE is the merge of PE and DAPI. (20X)



Immunohistochemical of paraffin-embedded human prostate cancer using 11724-1-AP(LIN 28 antibody) at dilution of 1:50 (under 40x lens)

Background

LIN28 is one of the four key human factors (OCT4, SOX2, NANOG and LIN28) used to reprogram human fibroblasts to an embryonic stem (ES) cell-like state known as the induced pluripotent stem (Ips) cell[PMID: 20139967]. Lin28 is a marker of undifferentiated human embryonic stem cells and a cytoplasmic Mrna-binding protein that binds to and enhances the translation of the IGF2 Mrna[PMID: 21057460]. LIN28 has also been shown to bind to the let-7 pre-miRNA and block production of the mature let-7 microRNA in mouse embryonic stem cells[PMID: 22078496]. Affinity purified rabbit anti-LIN28 can be used to demonstrate pluripotency of ES and Ips cells, and to detect LIN28 transgene expression in the process of reprogramming. This antibody is a rabbit polyclonal antibody raised against full length LIN28 of human origin.

Applications

Tested applications:	ELISA, WB, IHC, IP, IF
Cited applications:	IF, IHC, IP, WB
Species specificity:	Human, Mouse, Rat; other species not tested.
Cited species:	Human, mouse
Calculated LIN28 MW:	209aa, 23 kDa
Observed LIN28 MW:	28 kDa
Positive WB detected in	K-562 cells, NCCIT cell
Positive IP detected in	K-562 cells
Positive IHC detected in	Human prostate cancer tissue
Positive IF detected in	Human embryonic stem cells
Recommended dilution:	WB: 1:200-1:2000 IP: 1:200-1:2000 IHC: 1:20-1:200 IF: 1:20-1:200

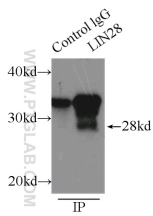
Application key: WB = Western blotting, IHC = Immunohistochemistry, IF = Immunofluorescence, IP = Immunoprecipitation

Immunogen information

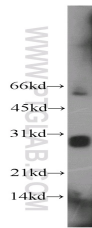
Immunogen:	Ag2312
GenBank accession number:	BC028566
Gene ID (NCBI):	79727
Full name:	Lin-28 homolog (C. elegans)

Product information

Purification method:	Antigen affinity purification
Storage:	PBS with 0.1% sodium azide and 50% glycerol pH 7.3. Store at -20°C.



IP Result of anti-LIN28
(IP:11724-1-AP, 3ug;
Detection:11724-1-AP 1:500)
with K-562 cells lysate 1000ug.



K-562 cells were subjected to
SDS PAGE followed by
western blot with 11724-1-
AP(LIN28 antibody) at
dilution of 1:300