

TIGD1 Polyclonal Antibody

Catalog number: 13833-1-AP

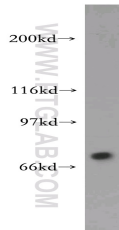
Size: 82 µg/150 µl

Source: Rabbit

Isotype: IgG

Synonyms:

TIGD1; EYORE



HepG2 cells were subjected to SDS PAGE followed by western blot with 13833-1-AP(TIGD1 Antibody) at dilution of 1:1000

Applications

Tested applications:	ELISA, WB
Species specificity:	Human; other species not tested.
Positive WB detected in:	HepG2 cells, human brain tissue, human cerebellum tissue
Calculated TIGD1 MW:	591aa,67kd
Observed TIGD1 MW:	68-70kd
Recommended dilution:	WB: 1:500-1:5000

Application key: WB = Western blotting, IHC = Immunohistochemistry, IF = Immunofluorescence, IP = Immunoprecipitation, FC = Flow cytometry

Immunogen information

Immunogen:	Ag4757
GenBank accession number:	BC035143
Gene ID (NCBI):	200765
Full name:	Tigger transposable element derived 1

Product information

Purification method:	Antigen affinity purification
Storage:	PBS with 0.02% sodium azide and 50% glycerol pH 7.3. Store at -20°C.