

SSSCA1 Polyclonal Antibody

Catalog number: 12273-1-AP

Size: 20 µg/150 µl

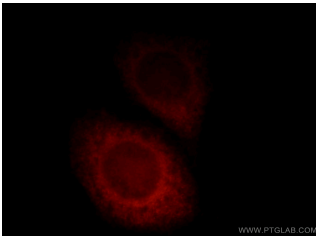
Source: Rabbit

Isotype: IgG

Synonyms:

SSSCA1; Autoantigen p27, p27,

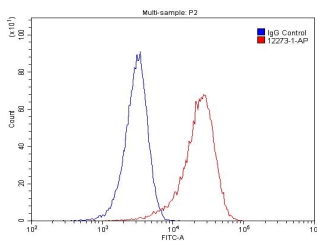
SSSCA1



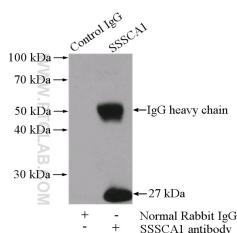
Immunofluorescent analysis of HeLa cells, using SSSCA1 antibody 12273-1-AP at 1:25 dilution and Rhodamine-labeled goat anti-rabbit IgG (red).



HeLa cells were subjected to SDS PAGE followed by western blot with 12273-1-AP(SSSCA1 antibody) at dilution of 1:500



1X10⁶ HeLa cells were stained with 0.2µg SSSCA1 antibody (12273-1-AP, red) and control antibody (blue). Fixed with 4% PFA blocked with 3% BSA (30 min). Alexa Fluor 488-conjugated AffiniPure Goat Anti-Rabbit IgG(H+L) with dilution 1:1500.



IP Result of anti-SSSCA1

Background

SSSCA1, also named as Autoantigen p27, is centromere-associated protein. It may induce anti-centromere antibodies. SSSCA1 plays a role in mitosis. It's involved in Sjogren syndrome/scleroderma.

Applications

Tested applications:	ELISA, WB, IF, IP, FC
Species specificity:	Human, Mouse, Rat; other species not tested.
Calculated SSSCA1 MW:	199aa, 21 kDa
Observed SSSCA1 MW:	27 kDa
Positive WB detected in	HeLa cells, A549 cells
Positive IP detected in	HeLa cells
Positive IF detected in	HeLa cells
Positive FC detected in	HeLa cells
Recommended dilution:	WB: 1:200-1:2000
	IP: 1:500-1:5000
	IF: 1:10-1:100
	FC: N/A

Application key: WB = Western blotting, IHC = Immunohistochemistry, IF = Immunofluorescence, IP = Immunoprecipitation

Immunogen information

Immunogen:	Ag2916
GenBank accession number:	BC014791
Gene ID (NCBI):	10534
Full name:	Sjogren syndrome/scleroderma autoantigen 1

Product information

Purification method:	Antigen affinity purification
Storage:	PBS with 0.1% sodium azide and 50% glycerol pH 7.3. Store at -20°C.

**(IP:12273-1-AP, 4ug;
Detection:12273-1-AP 1:1000)
with HeLa cells lysate 2000ug.**