

## ECH1 Polyclonal Antibody

Catalog number: 11385-1-AP

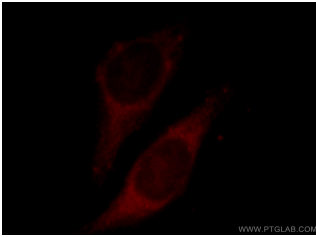
Size: 38 µg/150 µl

Source: Rabbit

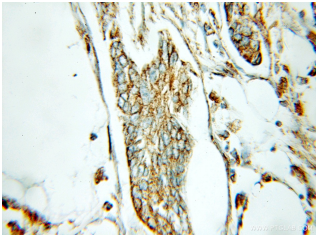
Isotype: IgG

Synonyms:

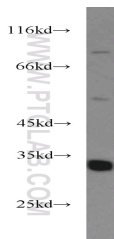
ECH1; ECH1, HPXEL



Immunofluorescent analysis of HepG2 cells, using ECH1 antibody 11385-1-AP at 1:25 dilution and Rhodamine-labeled goat anti-rabbit IgG (red).



Immunohistochemical of paraffin-embedded human pancreas cancer using 11385-1-AP (ECH1 antibody) at dilution of 1:100 (under 10x lens)



mouse liver tissue were subjected to SDS PAGE followed by western blot with 11385-1-AP (ECH1 antibody) at dilution of 1:500

### Applications

Tested applications:	ELISA, WB, IHC, IF
Cited applications:	WB
Species specificity:	Human, Mouse, Rat; other species not tested.
Cited species:	Mouse
Calculated ECH1 MW:	328aa, 36 kDa
Observed ECH1 MW:	30-36kd
Positive WB detected in	Mouse liver tissue, HepG2 cells, Jurkat cells, K-562 cells, L02 cells, mouse heart tissue
Positive IHC detected in	Human pancreas cancer tissue
Positive IF detected in	HepG2 cells
Recommended dilution:	WB: 1:500-1:5000 IHC: 1:20-1:200 IF: 1:10-1:100

Application key: WB = Western blotting, IHC = Immunohistochemistry, IF = Immunofluorescence, IP = Immunoprecipitation

### Immunogen information

Immunogen:	Ag1931
GenBank accession number:	BC017408
Gene ID (NCBI):	1891
Full name:	Enoyl Coenzyme A hydratase 1, peroxisomal

### Product information

Purification method:	Antigen affinity purification
Storage:	PBS with 0.1% sodium azide and 50% glycerol pH 7.3. Store at -20°C.