

CILP2 Polyclonal Antibody

Catalog number: 11813-1-AP

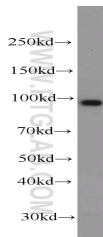
Size: 37 µg/150 µl

Source: Rabbit

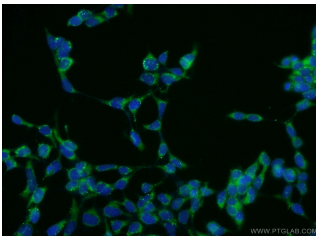
Isotype: IgG

Synonyms:

CILP2; CILP 2, CILP2, CLIP 2



K-562 cells were subjected to SDS PAGE followed by western blot with 11813-1-AP (CILP2 antibody) at dilution of 1:300



Immunofluorescent analysis of HEK-293 cells using 11813-1-AP (CILP2 Antibody) at dilution of 1:50 and Alexa Fluor 488-conjugated AffiniPure Goat Anti-Rabbit IgG(H+L)

Applications

Tested applications:	ELISA, WB, IF
Species specificity:	Human, Mouse; other species not tested.
Calculated CILP2 MW:	126 kDa
Observed CILP2 MW:	90 kDa
Positive WB detected in	K-562 cells, HEK-293 cells, mouse brain tissue
Positive IF detected in	HEK-293 cells
Recommended dilution:	WB: 1:200-1:1000 IF: 1:20-1:200

Application key: WB = Western blotting, IHC = Immunohistochemistry, IF = Immunofluorescence, IP = Immunoprecipitation

Immunogen information

Immunogen:	Ag2366
GenBank accession number:	BC034926
Gene ID (NCBI):	148113
Full name:	Cartilage intermediate layer protein 2

Product information

Purification method:	Antigen affinity purification
Storage:	PBS with 0.1% sodium azide and 50% glycerol pH 7.3. Store at -20°C.