

## MPI Polyclonal Antibody

Catalog number: 14234-1-AP

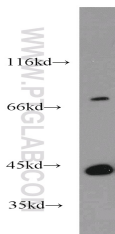
Size: 25 µg/150 µl

Source: Rabbit

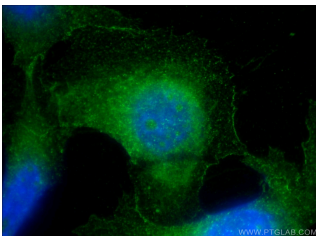
Isotype: IgG

Synonyms:

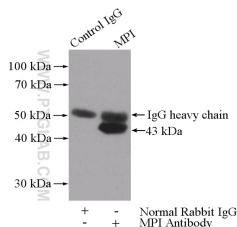
MPI; FLJ39201, Mannose 6 phosphate isomerase, mannose phosphate isomerase, MPI, Phosphohexomutase, Phosphomannose isomerase, PMI, PMI1



human brain tissue were subjected to SDS PAGE followed by western blot with 14234-1-AP(MPI antibody) at dilution of 1:1200



Immunofluorescent analysis of ( -20 Ethanol ) fixed NIH/3T3 cells using 14234-1-AP( MPI Antibody) at dilution of 1:50 and Alexa Fluor 488-conjugated AffiniPure Goat Anti-Rabbit IgG(H+L)



IP Result of anti-MPI (IP:14234-1-AP, 4ug; Detection:14234-1-AP 1:1000) with mouse brain tissue lysate 4000ug.

### Background

MPI(mannose-6-phosphate isomerase) is also named as PMI1 and belongs to the mannose-6-phosphate isomerase type 1 family. It is a zinc metalloenzyme that catalyzes the reversible isomerization of mannose-6-phosphate and fructose-6-phosphate. MPI plays a critical role in maintaining the supply of D-mannose derivatives, which are required for most glycosylation reactions. This protein has 2 isoforms produced by alternative splicing.

### Applications

Tested applications:	ELISA, WB, IP, IF
Species specificity:	Human, Mouse, Rat; other species not tested.
Calculated MPI MW:	47 kDa
Observed MPI MW:	43 kDa
Positive WB detected in	Human brain tissue, mouse brain tissue
Positive IP detected in	Mouse brain tissue
Positive IF detected in	NIH/3T3 cells
Recommended dilution:	WB: 1:500-1:5000 IP: 1:500-1:5000 IF: 1:50-1:500

Application key: WB = Western blotting, IHC = Immunohistochemistry, IF = Immunofluorescence, IP = Immunoprecipitation

### Immunogen information

Immunogen:	Ag5475
GenBank accession number:	BC046357
Gene ID (NCBI):	4351
Full name:	Mannose phosphate isomerase

### Product information

Purification method:	Antigen affinity purification
Storage:	PBS with 0.02% sodium azide and 50% glycerol pH 7.3. Store at -20°C.