

SLC17A5 Polyclonal Antibody

Catalog number: 13320-1-AP

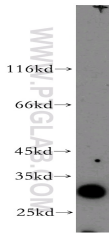
Size: 20 µg/150 µl

Source: Rabbit

Isotype: IgG

Synonyms:

SLC17A5; SLC17A5, ISSD, AST,
NSD, FLJ22227



human kidney tissue were subjected to SDS PAGE followed by western blot with 13320-1-AP(SLC17A5 antibody) at dilution of 1:300

Applications

Tested applications:	ELISA, WB
Species specificity:	Human, mouse, rat; other species not tested.
Calculated SLC17A5 MW:	495aa,55 kDa
Observed SLC17A5 MW:	31kd
Positive WB detected in	Human kidney tissue, HEK-293 cells, COLO 320 cells
Recommended dilution:	WB: 1:500-1:5000

Application key: WB = Western blotting, IHC = Immunohistochemistry, IF = Immunofluorescence, IP = Immunoprecipitation

Immunogen information

Immunogen:	Ag3855
GenBank accession number:	BC020961
Gene ID (NCBI):	26503
Full name:	Solute carrier family 17 (anion/sugar transporter), member 5

Product information

Purification method:	Antigen affinity purification
Storage:	PBS with 0.02% sodium azide and 50% glycerol pH 7.3. Store at -20°C.