

PI4KB Polyclonal Antibody

Catalog number: 13247-1-AP

Size: 20 µg/150 µl

Source: Rabbit

Isotype: IgG

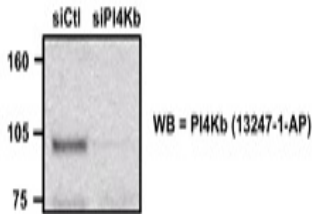
Synonyms:

PI4KB; PI4 kinase beta, PI4K BETA, pi4K92, PI4KB, PI4Kbeta, PI4KIIIbeta, PIK4CB, PtdIns 4 kinase beta

Applications

Tested applications:	ELISA, WB, IP
Species specificity:	Human, Mouse, Rat; other species not tested.
Calculated PI4KB MW:	801aa, 90 kDa
Observed PI4KB MW:	100 kDa
Positive WB detected in	K-562 cells, Jurkat cells, NIH-3T3 cells (RNAi)
Positive IP detected in	K-562 cells
Recommended dilution:	WB: 1:200-1:2000 IP: 1:200-1:1000

Application key: WB = Western blotting, IHC = Immunohistochemistry, IF = Immunofluorescence, IP = Immunoprecipitation



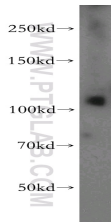
WB result of anti-PI4Kb (13247-1-AP) with NIH-3T3 cells (RNAi).

Immunogen information

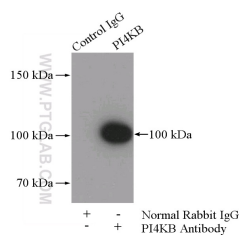
Immunogen:	Ag3989
GenBank accession number:	BC040300
Gene ID (NCBI):	5298
Full name:	Phosphatidylinositol 4-kinase, catalytic, beta

Product information

Purification method:	Antigen affinity purification
Storage:	PBS with 0.02% sodium azide and 50% glycerol pH 7.3. Store at -20°C.



K-562 cells were subjected to SDS PAGE followed by western blot with 13247-1-AP (PI4KB antibody) at dilution of 1:300



IP Result of anti-PI4KB (IP:13247-1-AP, 4µg; Detection:13247-1-AP 1:300) with K-562 cells lysate 3600µg.