

POLR2C Polyclonal Antibody

Catalog number: 13428-1-AP

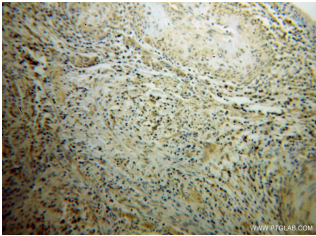
Size: 60 µg/150 µl

Source: Rabbit

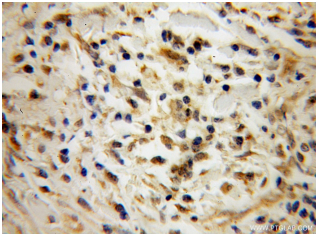
Isotype: IgG

Synonyms:

POLR2C; hRPB33, hsRPB3,
POLR2C, RNA polymerase II
subunit 3, RNA polymerase II
subunit B3, RPB3, RPB31,
RPB33



Immunohistochemical of paraffin-embedded human cervical cancer using 13428-1-AP (POLR2C antibody) at dilution of 1:100 (under 10x lens)



Immunohistochemical of paraffin-embedded human cervical cancer using 13428-1-AP (POLR2C antibody) at dilution of 1:100 (under 40x lens)

Applications

Tested applications:	ELISA, WB, IHC, IP
Species specificity:	Human, Mouse, Rat; other species not tested.
Calculated POLR2C MW:	275aa, 33 kDa
Observed POLR2C MW:	33 kDa
Positive WB detected in	Human kidney tissue, HeLa cells, mouse kidney tissue
Positive IP detected in	HeLa cells
Positive IHC detected in	Human cervical cancer tissue
Recommended dilution:	WB: 1:500-1:5000
	IP: 1:200-1:2000
	IHC: 1:20-1:200

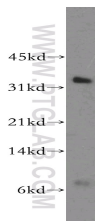
Application key: WB = Western blotting, IHC = Immunohistochemistry, IF = Immunofluorescence, IP = Immunoprecipitation

Immunogen information

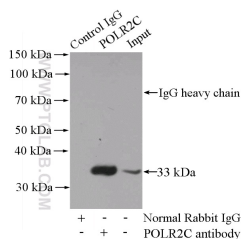
Immunogen:	Ag4228
GenBank accession number:	BC028157
Gene ID (NCBI):	5432
Full name:	Polymerase (RNA) II (DNA directed) polypeptide C, 33kDa

Product information

Purification method:	Antigen affinity purification
Storage:	PBS with 0.02% sodium azide and 50% glycerol pH 7.3. Store at -20°C.



human kidney tissue were subjected to SDS PAGE followed by western blot with 13428-1-AP (POLR2C antibody) at dilution of 1:500



IP Result of anti-POLR2C
(IP:13428-1-AP, 4ug;
Detection:13428-1-AP 1:500)
with HeLa cells lysate 2000ug.