

POLK Polyclonal Antibody

Catalog number: 14455-1-AP

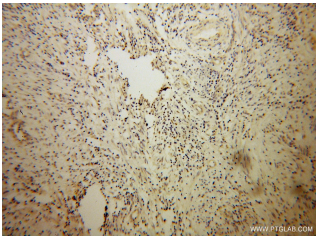
Size: 20 µg/150 µl

Source: Rabbit

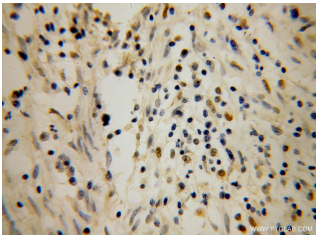
Isotype: IgG

Synonyms:

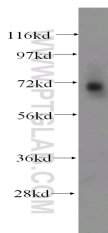
POLK; POLK, DINB1, DNA polymerase kappa, DINP, DINB protein



Immunohistochemical of paraffin-embedded human cervical cancer using 14455-1-AP (POLK antibody) at dilution of 1:100 (under 10x lens)



Immunohistochemical of paraffin-embedded human cervical cancer using 14455-1-AP (POLK antibody) at dilution of 1:100 (under 40x lens)



HeLa cells were subjected to SDS PAGE followed by western blot with 14455-1-AP (POLK antibody) at dilution of 1:500

Applications

Tested applications:	ELISA, WB, IHC
Species specificity:	Human, mouse, rat; other species not tested.
Calculated POLK MW:	99 kDa
Observed POLK MW:	70kd
Positive WB detected in:	HeLa cells
Positive IHC detected in:	Human cervical cancer
Recommended dilution:	WB: 1:500-1:5000 IHC: 1:20-1:200

Application key: WB = Western blotting, IHC = Immunohistochemistry, IF = Immunofluorescence, IP = Immunoprecipitation

Immunogen information

Immunogen:	Ag6034
GenBank accession number:	BC050718
Gene ID (NCBI):	51426
Full name:	Polymerase (DNA directed) kappa

Product information

Purification method:	Antigen affinity purification
Storage:	PBS with 0.02% sodium azide and 50% glycerol pH 7.3. Store at -20°C.