

KIF1C Polyclonal Antibody

Catalog number: 12760-1-AP

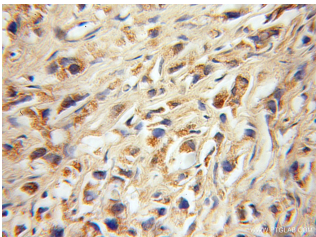
Size: 27 µg/150 µl

Source: Rabbit

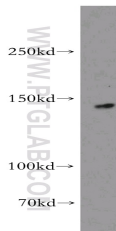
Isotype: IgG

Synonyms:

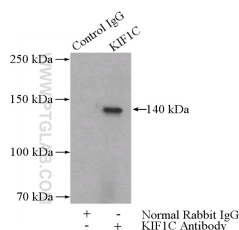
KIF1C; KIAA0706, KIF1C,
kinesin family member 1C,
Kinesin like protein KIF1C,
LTXS1



Immunohistochemical of paraffin-embedded human gliomas using 12760-1-AP (KIF1C antibody) at dilution of 1:100 (under 10x lens)



mouse heart tissue were subjected to SDS PAGE followed by western blot with 12760-1-AP (KIF1C antibody) at dilution of 1:500



IP Result of anti-KIF1C (IP:12760-1-AP, 5µg; Detection:12760-1-AP 1:300) with mouse heart tissue lysate 4000µg.

Applications

Tested applications:	ELISA, WB, IHC, IP
Species specificity:	Human, Mouse, Rat; other species not tested.
Calculated KIF1C MW:	1103aa, 123 kDa
Observed KIF1C MW:	135-140 kDa
Positive WB detected in:	Mouse heart tissue
Positive IP detected in:	Mouse heart tissue
Positive IHC detected in:	Human gliomas tissue
Recommended dilution:	WB: 1:500-1:5000 IP: 1:200-1:1000 IHC: 1:20-1:200

Application key: WB = Western blotting, IHC = Immunohistochemistry, IF = Immunofluorescence, IP = Immunoprecipitation

Immunogen information

Immunogen:	Ag3500
GenBank accession number:	BC034993
Gene ID (NCBI):	10749
Full name:	Kinesin family member 1C

Product information

Purification method:	Antigen affinity purification
Storage:	PBS with 0.02% sodium azide and 50% glycerol pH 7.3. Store at -20°C.