

## SUGT1 Polyclonal Antibody

Catalog number: 11675-1-AP

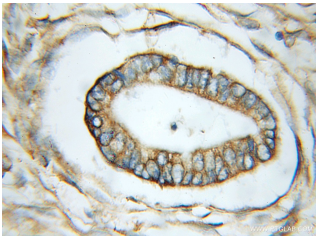
Size: 33 µg/150 µl

Source: Rabbit

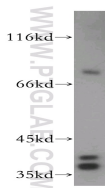
Isotype: IgG

Synonyms:

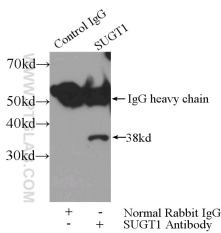
SUGT1; Protein 40 6 3, SGT1, SUGT1



Immunohistochemical of paraffin-embedded human pancreas cancer using 11675-1-AP(SUGT1 antibody) at dilution of 1:50 (under 10x lens)



Jurkat cells were subjected to SDS PAGE followed by western blot with 11675-1-AP(SUGT1 antibody) at dilution of 1:300



IP Result of anti-SUGT1 (IP:11675-1-AP, 3ug; Detection:11675-1-AP 1:500) with HEK-293 cells lysate 3200ug.

### Applications

|                          |   |
|--------------------------|---|
| Tested applications:     | ELISA, WB, IHC, IP                            |
| Cited applications:      | IHC   |
| Species specificity:     | Human, Mouse, Rat; other species not tested.  |
| Cited species:           | Human   |
| Calculated SUGT1 MW:     | 41 kDa  |
| Observed SUGT1 MW:       | 38kd and 41kd                                 |
| Positive WB detected in  | Jurkat cells, HeLa cells, human kidney tissue |
| Positive IP detected in  | HEK-293 cells                                 |
| Positive IHC detected in | Human pancreas cancer tissue                  |
| Recommended dilution:    | WB: 1:1000-1:10000                            |
|                          | IP: 1:200-1:2000                              |
|                          | IHC: 1:20-1:200                               |

Application key: WB = Western blotting, IHC = Immunohistochemistry, IF = Immunofluorescence, IP = Immunoprecipitation

### Immunogen information

|                           |  |
|---------------------------|--|
| Immunogen:                | Ag2275   |
| GenBank accession number: | BC000911   |
| Gene ID (NCBI):           | 10910  |
| Full name:                | SGT1, suppressor of G2 allele of SKP1 ( <i>S. cerevisiae</i> ) |

### Product information

|                      |   |
|----------------------|---|
| Purification method: | Antigen affinity purification                                       |
| Storage:             | PBS with 0.1% sodium azide and 50% glycerol pH 7.3. Store at -20°C. |