

CDT1 Polyclonal Antibody

Catalog number: 14382-1-AP

Size: 38 µg/150 µl

Source: Rabbit

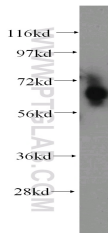
Isotype: IgG

Synonyms:

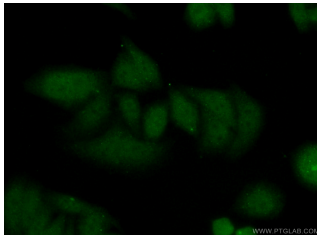
CDT1; CDT1, DNA replication

factor Cdt1, Double parked

homolog, DUP, RIS2



Jurkat cells were subjected to SDS PAGE followed by western blot with 14382-1-AP (CDT1 antibody) at dilution of 1:500



Immunofluorescent analysis of (10% Formaldehyde) fixed HepG2 cells using 14382-1-AP (CDT1 Antibody) at dilution of 1:50 and Alexa Fluor 488-conjugated AffiniPure Goat Anti-Rabbit IgG(H+L)

Background

CDT1, also named as DUP, is an essential licensing protein for DNA replication, can function as an oncogene in mammals. CDT1 is a 60-65 kDa protein for phosphor modification.

Applications

Tested applications:	ELISA, WB, IF
Cited applications:	IHC, WB
Species specificity:	Human; other species not tested.
Cited species:	Mouse
Calculated CDT1 MW:	60 kDa
Observed CDT1 MW:	65 kDa
Positive WB detected in	Jurkat cells, HepG2 cells
Positive IF detected in	HepG2 cells
Recommended dilution:	WB: 1:500-1:5000 IF: 1:50-1:500

Application key: WB = Western blotting, IHC = Immunohistochemistry, IF = Immunofluorescence, IP = Immunoprecipitation

Immunogen information

Immunogen:	Ag5810
GenBank accession number:	BC000137
Gene ID (NCBI):	81620
Full name:	Chromatin licensing and DNA replication factor 1

Product information

Purification method:	Antigen affinity purification
Storage:	PBS with 0.02% sodium azide and 50% glycerol pH 7.3. Store at -20°C.