

Cytochrome b5 PolyAb Antibody

Catalog number: 12365-1-AP

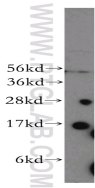
Size: 22 µg/150 µl

Source: Rabbit

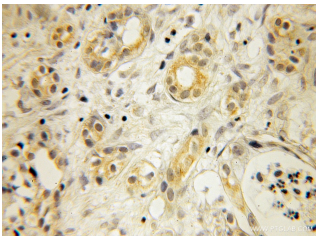
Isotype: IgG

Synonyms:

CYB5A; CYB5; MCB5



human liver tissue were subjected to SDS PAGE followed by western blot with 12365-1-AP(Cytochrome b5 Antibody) at dilution of 1:800



Immunohistochemistry of paraffin-embedded human pancreas cancer using 12365-1-AP(Cytochrome b5 Antibody) at Dilution 1:50 (under 10x lens)

Applications

Tested applications:	ELISA, WB, IHC
Species specificity:	Human, Mouse, Rat; other species not tested.
Positive WB detected in:	Human liver tissue
Calculated Cytochrome b5 MW:	134aa, 15kd
Observed Cytochrome b5 MW:	15kd
Positive IHC detected in:	Human pancreas cancer
Recommended dilution:	WB: 1:200-1:2000 IHC: 1:20-1:200

Application key: WB = Western blotting, IHC = Immunohistochemistry, IF = Immunofluorescence, IP = Immunoprecipitation, FC = Flow cytometry

Immunogen information

Immunogen:	Ag3038
GenBank accession number:	BC015182
Gene ID (NCBI):	1528
Full name:	Cytochrome b5 type A (microsomal)

Product information

Purification method:	Antigen affinity purification
Storage:	PBS with 0.1% sodium azide and 50% glycerol pH 7.3. Store at -20°C.