

## Arylsulfatase D Polyclonal Antibody

Catalog number: 11805-1-AP

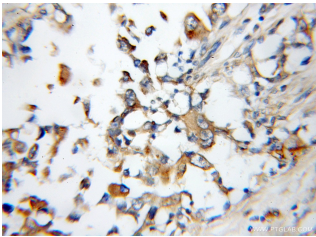
Size: 20 µg/150 µl

Source: Rabbit

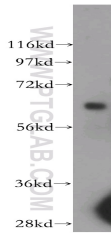
Isotype: IgG

Synonyms:

ARSD; ARSD, Arylsulfatase D,  
ASD



Immunohistochemical of paraffin-embedded human breast cancer using 11805-1-AP (ARSD antibody) at dilution of 1:50 (under 10x lens)



human placenta tissue were subjected to SDS PAGE followed by western blot with 11805-1-AP (ARSD antibody) at dilution of 1:500

### Applications

Tested applications:	ELISA, WB, IHC
Species specificity:	Human; other species not tested.
Calculated Arylsulfatase D MW:	593aa, 65kd
Observed Arylsulfatase D MW:	65kd
Positive WB detected in	Human placenta tissue
Positive IHC detected in	Human breast cancer tissue
Recommended dilution:	WB: 1:500-1:5000 IHC: 1:20-1:200

Application key: WB = Western blotting, IHC = Immunohistochemistry, IF = Immunofluorescence, IP = Immunoprecipitation

### Immunogen information

Immunogen:	Ag2477
GenBank accession number:	BC020229
Gene ID (NCBI):	414
Full name:	Arylsulfatase D

### Product information

Purification method:	Antigen affinity purification
Storage:	PBS with 0.1% sodium azide and 50% glycerol pH 7.3. Store at -20°C.