

## TPSAB1 Polyclonal Antibody

Catalog number: 13343-1-AP

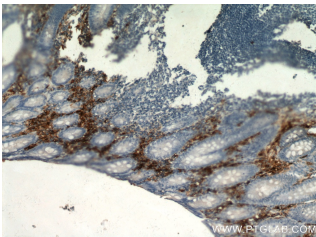
Size: 20 µg/150 µl

Source: Rabbit

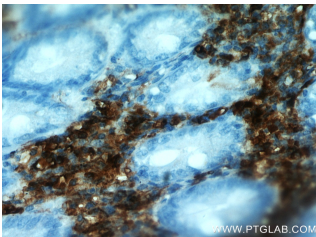
Isotype: IgG

Synonyms:

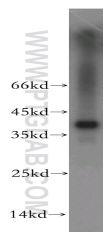
TPSAB1; MCP7, TPS1, TPS2, TPSAB1, TPSB1, Tryptase 1, tryptase alpha/beta 1, Tryptase beta 1, Tryptase I



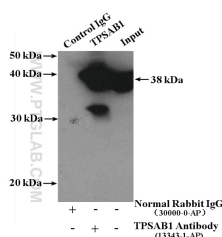
Immunohistochemical of paraffin-embedded human appendix using 13343-1-AP (TPSAB1 antibody) at dilution of 1:100 (under 10x lens)



Immunohistochemical of paraffin-embedded human appendix using 13343-1-AP (TPSAB1 antibody) at dilution of 1:100 (under 40x lens)



mouse liver tissue were subjected to SDS PAGE followed by western blot with 13343-1-AP (TPSAB1 antibody) at dilution of 1:800



IP Result of anti-TPSAB1

### Applications

Tested applications:	ELISA, WB, IHC, IP
Species specificity:	Human, Mouse, Rat; other species not tested.
Calculated TPSAB1 MW:	275aa, 31 kDa
Observed TPSAB1 MW:	32-38 kDa
Positive WB detected in:	Mouse liver tissue, mouse colon tissue
Positive IP detected in:	Mouse liver tissue
Positive IHC detected in:	Human appendix tissue, human tonsillitis tissue
Recommended dilution:	WB: 1:500-1:5000
	IP: 1:200-1:2000
	IHC: 1:20-1:200

Application key: WB = Western blotting, IHC = Immunohistochemistry, IF = Immunofluorescence, IP = Immunoprecipitation

### Immunogen information

Immunogen:	Ag4167
GenBank accession number:	BC028059
Gene ID (NCBI):	7177
Full name:	Tryptase alpha/beta 1

### Product information

Purification method:	Antigen affinity purification
Storage:	PBS with 0.02% sodium azide and 50% glycerol pH 7.3. Store at -20°C.

**(IP:13343-1-AP, 4ug;  
Detection:13343-1-AP 1:800)  
with mouse liver tissue lysate  
4000ug.**