

MLXIP Polyclonal Antibody

Catalog number: 13614-1-AP

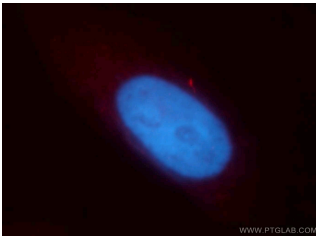
Size: 52 µg/150 µl

Source: Rabbit

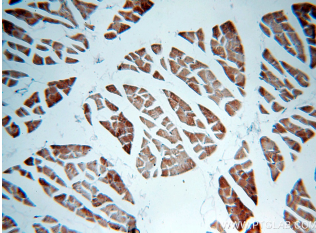
Isotype: IgG

Synonyms:

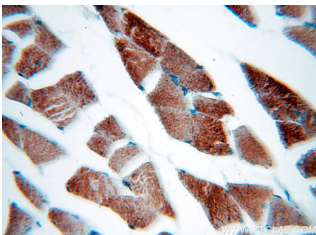
MLXIP; bHLHe36, KIAA0867, MIR, MLX interacting protein, MLXIP, MONDOA



Immunofluorescent analysis of HepG2 cells, using MLXIP antibody 13614-1-AP at 1:25 dilution and Rhodamine-labeled goat anti-rabbit IgG (red). Blue pseudocolor = DAPI (fluorescent DNA dye).



Immunohistochemical of paraffin-embedded human skeletal muscle using 13614-1-AP(MLXIP antibody) at dilution of 1:100 (under 10x lens)



Immunohistochemical of paraffin-embedded human skeletal muscle using 13614-1-AP(MLXIP antibody) at dilution of 1:100 (under 40x lens)

Background

MLx-interacting protein(MLXIP), after forming heterodimers with MLX, can bind to and then activate transcription from CACGTG E boxes. The N terminus of MLXIP acts as a CRM1-dependent nuclear export signal and contribute to the cytoplasmic localization of the complex, and as a binding site for 13 protein. the C terminus contains a cytoplasmic localization signal and mediates protein-protein interaction of MONDOA and MLX. The complex play a role in transcriptional activation of glycolytic target genes and glucose-responsive gene regulation. This antibody could recognize isoform1(~110kd) and isoform3(~69kd) of MLXIP.

Applications

Tested applications:	ELISA, WB, IHC, IF, IP
Cited applications:	ChIP, IP, WB
Species specificity:	Human, Mouse, Rat; other species not tested.
Cited species:	Human, mouse
Calculated MLXIP MW:	919aa, 100 kDa
Observed MLXIP MW:	130 kDa
Positive WB detected in	K-562 cells
Positive IP detected in	K-562 cells
Positive IHC detected in	Human skeletal muscle tissue
Positive IF detected in	HepG2 cells
Recommended dilution:	WB: 1:500-1:5000 IP: 1:200-1:1000 IHC: 1:20-1:200 IF: 1:10-1:100

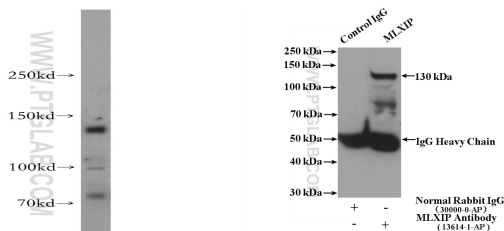
Application key: WB = Western blotting, IHC = Immunohistochemistry, IF = Immunofluorescence, IP = Immunoprecipitation

Immunogen information

Immunogen:	Ag4519
GenBank accession number:	BC039704
Gene ID (NCBI):	22877
Full name:	MLX interacting protein

Product information

Purification method:	Antigen affinity purification
Storage:	PBS with 0.02% sodium azide and 50% glycerol pH 7.3. Store at -20°C.



K-562 cells were subjected to IP Result of anti-MLXIP

SDS PAGE followed by
western blot with 13614-1-
AP(MLXIP antibody) at
dilution of 1:500

(IP:13614-1-AP, 4ug;
Detection:13614-1-AP 1:300)
with K-562 cells lysate 3200ug.