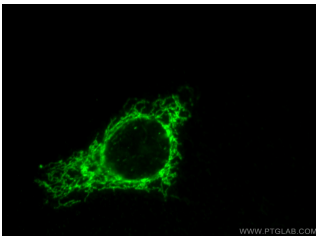
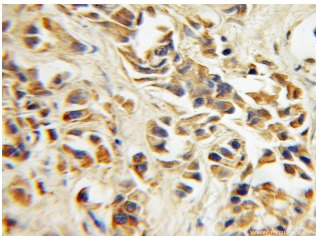


COXIV Polyclonal Antibody

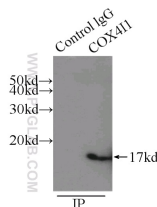
Catalog number: 11242-1-AP
Size: 38 µg/150 µl
Source: Rabbit
Isotype: IgG
Synonyms:
COX4I1; COX IV 1, COX4,
COX4I1, COXIV, Cytochrome c
oxidase polypeptide IV,
Cytochrome c oxidase subunit 4
isoform 1 mitochondrial



Immunofluorescent analysis of HepG2 cells, using COX4I1 antibody 11242-1-AP at 1:50 dilution and FITC-labeled donkey anti-rabbit IgG (green).



Immunohistochemical of paraffin-embedded human prostate cancer using 11242-1-AP (COXIV antibody) at dilution of 1:100 (under 10x lens)



IP Result of anti-COXIV (IP:11242-1-AP, 3µg; Detection:11242-1-AP 1:1000) with mouse skeletal muscle tissue lysate 3500µg.

Background

COX4I1, also named as COX4 and COXIV-1, belongs to the cytochrome c oxidase IV family. It is one of the nuclear-coded polypeptide chains of cytochrome c oxidase, the terminal oxidase in mitochondrial electron transport. COX4I1 is a marker for mitochondria. It has two isoforms (isoform 1 and 2). Isoform 1 (COX4I1) is ubiquitously expressed and isoform 2 is highly expressed in lung tissues. COX4I1 is commonly used as a loading control. This antibody was generated against full length COX4I1 protein and cross reacts with COX4I2.

Applications

Tested applications:	ELISA, WB, IHC, IF, IP, FC
Cited applications:	WB
Species specificity:	Human, Mouse, Rat; other species not tested.
Cited species:	Human, mouse, rat
Calculated COXIV MW:	19.6 kDa
Observed COXIV MW:	17-18kd
Positive WB detected in	MCF7 cells, A375 cells, A431 cells, A549 cells, HEK-293 cells, HeLa cells, HepG2 cells, human brain tissue, human lung tissue, human skeletal muscle tissue, human skin tissue, human spleen tissue, Jurkat cells, L02 cells, mouse brain tissue, mouse heart tissue, mouse liver tissue, mouse skeletal muscle tissue, NIH/3T3 cells, rat brain tissue, rat liver tissue
Positive IP detected in	Mouse skeletal muscle tissue
Positive IHC detected in	Human prostate cancer tissue, human heart tissue, human pancreas tissue
Positive IF detected in	HepG2 cells
Positive FC detected in	HepG2 cells
Recommended dilution:	WB: 1:500-1:5000 IP: 1:500-1:5000 IHC: 1:20-1:200 IF: 1:20-1:200 FC: N/A

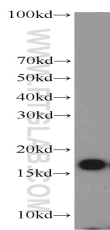
Application key: WB = Western blotting, IHC = Immunohistochemistry, IF = Immunofluorescence, IP = Immunoprecipitation

Immunogen information

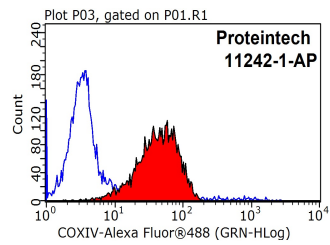
Immunogen:	Ag1640
GenBank accession number:	BC021236
Gene ID (NCBI):	1327
Full name:	Cytochrome c oxidase subunit IV isoform 1

Product information

Purification method:	Antigen affinity purification
Storage:	PBS with 0.1% sodium azide and 50% glycerol pH 7.3. Store at -20°C.



MCF7 cells were subjected to SDS PAGE followed by western blot with 11242-1-AP(COXIV antibody) at dilution of 1:1000



1X10⁶ HepG2 cells were stained with .2ug COXIV antibody (11242-1-AP, red) and control antibody (blue). Fixed with 90% MeOH blocked with 3% BSA (30 min). Alexa Fluor 488-conjugated AffiniPure Goat Anti-Rabbit IgG(H+L) with dilution 1:1000.