

BST2 Polyclonal Antibody

Catalog number: 13560-1-AP

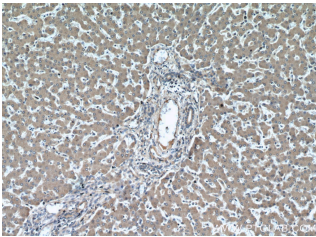
Size: 25 µg/150 µl

Source: Rabbit

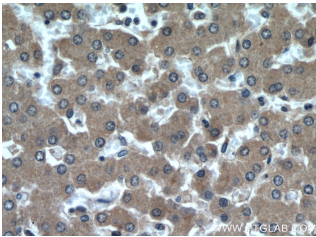
Isotype: IgG

Synonyms:

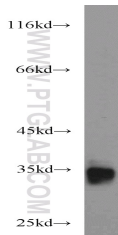
BST2; Bone marrow stromal antigen 2, BST 2, BST2, CD317, HM1.24 antigen, Tetherin



Immunohistochemical of paraffin-embedded human liver using 13560-1-AP(BST2 antibody) at dilution of 1:50 (under 10x lens)



Immunohistochemical of paraffin-embedded human liver using 13560-1-AP(BST2 antibody) at dilution of 1:50 (under 40x lens)



human heart tissue were subjected to SDS PAGE followed by western blot with 13560-1-AP(BST2 antibody) at dilution of 1:1000

Background

BST2, also named as CD317 and Tetherin, belongs to the tetherin family. It may be involved in the sorting of secreted proteins and it is involved in pre-B-cell growth. BST2 is an antiretroviral defense protein, that blocks release of retrovirus from the cell surface. Depleted upon HIV-1 infection by viral VPU protein through 20S proteasome degradation. Depleted upon infection by human Kaposi's sarcoma-associated herpesvirus (KSHV) through ubiquitination and subsequent degradation. BST2 may play a role in B-cell activation in rheumatoid arthritis. It is recently identified interferon-induced cellular proteins that restrict infections by retroviruses and filoviruses and of influenza virus and flaviviruses, respectively. BST2 is a plasma membrane proteins, tetherin inhibits virion particle release from infected cells. BST2 is effective against retroviruses and flaviviruses whilst IFITMs disrupt influenza and flavivirus infection.

Applications

Tested applications:	ELISA, WB, IHC, IF, FC
Cited applications:	IF, WB
Species specificity:	Human; other species not tested.
Cited species:	Human
Calculated BST2 MW:	180aa, 20 kDa
Observed BST2 MW:	30-36 kDa
Positive WB detected in	Human heart tissue, human liver tissue, L02 cells
Positive IHC detected in	Human liver tissue
Positive IF detected in	HepG2 cells
Positive FC detected in	HepG2 cells
Recommended dilution:	WB: 1:500-1:5000
	IHC: 1:20-1:200
	IF: 1:20-1:200
	FC: N/A

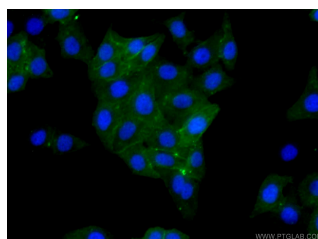
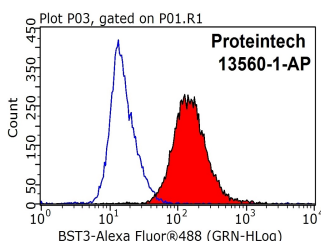
Application key: WB = Western blotting, IHC = Immunohistochemistry, IF = Immunofluorescence, IP = Immunoprecipitation

Immunogen information

Immunogen:	Ag4430
GenBank accession number:	BC033873
Gene ID (NCBI):	684
Full name:	Bone marrow stromal cell antigen 2

Product information

Purification method:	Antigen affinity purification
Storage:	PBS with 0.02% sodium azide and 50% glycerol pH 7.3. Store at -20°C.



1X10⁶ HepG2 cells were stained with 0.2ug BST2 antibody (13560-1-AP, red) and control antibody (blue). Fixed with 90% MeOH blocked with 3% BSA (30 min). Alexa Fluor 488-conjugated AffiniPure Goat Anti-Rabbit IgG(H+L) with dilution 1:1000.

Immunofluorescent analysis of HepG2 cells using 13560-1-AP (BST2 Antibody) at dilution of 1:50 and Alexa Fluor 488-conjugated AffiniPure Goat Anti-Rabbit IgG(H+L)