

PARVG Polyclonal Antibody

Catalog number: 13284-1-AP

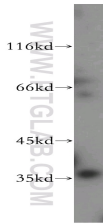
Size: 20 µg/150 µl

Source: Rabbit

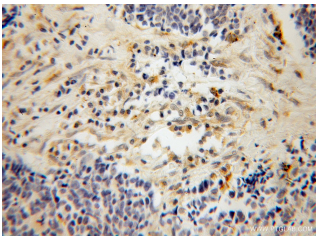
Isotype: IgG

Synonyms:

PARVG;



HL-60 cells were subjected to SDS PAGE followed by western blot with 13284-1-AP (PARVG Antibody) at dilution of 1:600



Immunohistochemistry of paraffin-embedded human lung cancer using 13284-1-AP (PARVG Antibody) at Dilution 1:100 (under 10x lens)

Applications

Tested applications:	ELISA, WB, IHC
Species specificity:	Human, mouse, rat; other species not tested.
Positive WB detected in:	HL-60 cells
Calculated PARVG MW:	331aa, 37kd
Observed PARVG MW:	37kd
Positive IHC detected in:	Human lung cancer
Recommended dilution:	WB: 1:200-1:2000 IHC: 1:50-1:200

Application key: WB = Western blotting, IHC = Immunohistochemistry, IF = Immunofluorescence, IP = Immunoprecipitation, FC = Flow cytometry

Immunogen information

Immunogen:	Ag4109
GenBank accession number:	BC034406
Gene ID (NCBI):	64098
Full name:	Parvin, gamma

Product information

Purification method:	Antigen affinity purification
Storage:	PBS with 0.02% sodium azide and 50% glycerol pH 7.3. Store at -20°C.