

CARD9 Polyclonal Antibody

Catalog number: 10669-1-AP

Size: 45 µg/150 µl

Source: Rabbit

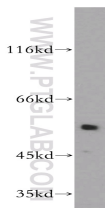
Isotype: IgG

Synonyms:

CARD9; CARD9, hCARD9



PC-3 cells were subjected to SDS PAGE followed by western blot with 10669-1-AP(CARD9 antibody) at dilution of 1:500



HL-60 cells were subjected to SDS PAGE followed by western blot with 10669-1-AP(CARD9 antibody) at dilution of 1:300

Background

CARD9, a member of the caspase recruitment domain (CARD) protein family, plays an important regulatory role in cell apoptosis. Defects in CARD9 are the cause of familial candidiasis type 2 (CANDF2) characterized by impaired clearance of fungal infections and results in colonization and infections of the mucosa or skin, predominantly with *Candida albicans*. CARD9 is highly expressed in spleen and regulate activation of NF-kappa-B by interaction with positive regulator of apoptosis BCL10 via the CARD domain.

Applications

Tested applications:	ELISA, WB
Cited applications:	WB
Species specificity:	Human,Mouse,Rat; other species not tested.
Cited species:	Human
Calculated CARD9 MW:	62kd
Observed CARD9 MW:	50-59kd
Positive WB detected in	PC-3 cells, HEK-293 cells, HL-60 cells, human placenta tissue
Recommended dilution:	WB: 1:200-1:2000

Application key: WB = Western blotting, IHC = Immunohistochemistry, IF = Immunofluorescence, IP = Immunoprecipitation

Immunogen information

Immunogen:	Ag1057
GenBank accession number:	BC008877
Gene ID (NCBI):	64170
Full name:	Caspase recruitment domain family, member 9

Product information

Purification method:	Antigen affinity purification
Storage:	PBS with 0.1% sodium azide and 50% glycerol pH 7.3. Store at -20°C.