

DIXDC1 Polyclonal Antibody

Catalog number: 13816-1-AP

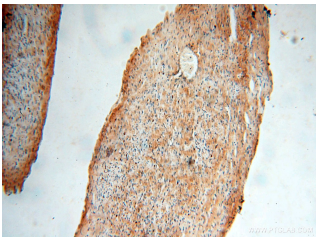
Size: 40 µg/150 µl

Source: Rabbit

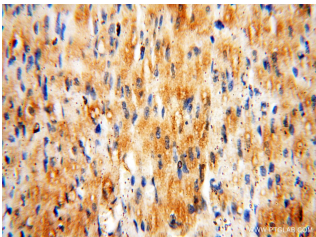
Isotype: IgG

Synonyms:

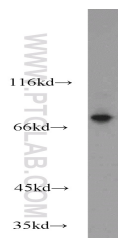
DIXDC1; CCD1, Coiled coil DIX1, Coiled coil protein DIX1, DIX domain containing 1, DIXDC1, Dixin, KIAA1735



Immunohistochemical of paraffin-embedded human heart using 13816-1-AP(DIXDC1 antibody) at dilution of 1:100 (under 10x lens)



Immunohistochemical of paraffin-embedded human heart using 13816-1-AP(DIXDC1 antibody) at dilution of 1:100 (under 40x lens)



mouse skeletal muscle tissue were subjected to SDS PAGE followed by western blot with 13816-1-AP(DIXDC1 antibody) at dilution of 1:1500

Applications

Tested applications:	ELISA, WB, IHC
Species specificity:	Human, Mouse, Rat; other species not tested.
Calculated DIXDC1 MW:	683aa, 77 kDa
Observed DIXDC1 MW:	70-75 kDa
Positive WB detected in	Mouse skeletal muscle tissue, mouse heart tissue
Positive IHC detected in	Human heart tissue, human kidney tissue, human lung tissue, human ovary tissue, human skin tissue, human testis tissue
Recommended dilution:	WB: 1:500-1:5000 IHC: 1:20-1:200

Application key: WB = Western blotting, IHC = Immunohistochemistry, IF = Immunofluorescence, IP = Immunoprecipitation

Immunogen information

Immunogen:	Ag4904
GenBank accession number:	BC033034
Gene ID (NCBI):	85458
Full name:	DIX domain containing 1

Product information

Purification method:	Antigen affinity purification
Storage:	PBS with 0.02% sodium azide and 50% glycerol pH 7.3. Store at -20°C.