

ATF1 Polyclonal Antibody

Catalog number: 11946-1-AP

Size: 34 µg/150 µl

Source: Rabbit

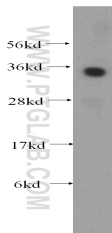
Isotype: IgG

Synonyms:

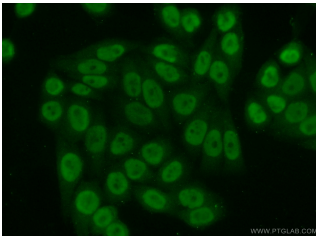
ATF1; ATF1, EWS ATF1,

FUS/ATF 1, Protein TREB36,

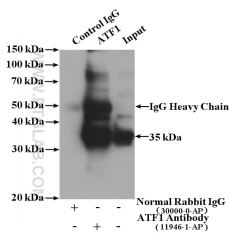
TREB36



HeLa cells were subjected to SDS PAGE followed by western blot with 11946-1-AP(ATF1 antibody) at dilution of 1:500



Immunofluorescent analysis of (10% Formaldehyde) fixed HeLa cells using 11946-1-AP(ATF1 Antibody) at dilution of 1:50 and Alexa Fluor 488-conjugated AffiniPure Goat Anti-Rabbit IgG(H+L)



IP Result of anti-ATF1 (IP:11946-1-AP, 4ug; Detection:11946-1-AP 1:500) with HeLa cells lysate 3200ug.

Applications

Tested applications:	ELISA, WB, IP, IF
Species specificity:	Human,Mouse,Rat; other species not tested.
Calculated ATF1 MW:	271aa,29 kDa
Observed ATF1 MW:	35 kDa
Positive WB detected in	HeLa cells, A431 cells, human brain tissue
Positive IP detected in	HeLa cells
Positive IF detected in	HeLa cells
Recommended dilution:	WB: 1:200-1:2000
	IP: 1:200-1:2000
	IF: 1:50-1:500

Application key: WB = Western blotting, IHC= Immunohistochemistry, IF = Immunofluorescence, IP = Immunoprecipitation

Immunogen information

Immunogen:	Ag2548
GenBank accession number:	BC029619
Gene ID (NCBI):	466
Full name:	Activating transcription factor 1

Product information

Purification method:	Antigen affinity purification
Storage:	PBS with 0.02% sodium azide and 50% glycerol pH 7.3. Store at -20°C.