

ATF2 Polyclonal Antibody

Catalog number: 11908-1-AP

Size: 52 µg/150 µl

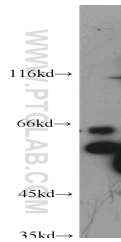
Source: Rabbit

Isotype: IgG

Synonyms:

ATF2; CRE-BP1; CREB2; HB16;

MGC111558; TREB7



HeLa cells were subjected to SDS PAGE followed by western blot with 11908-1-AP(ATF2 Antibody) at dilution of 1:500

Applications

Tested applications:	ELISA, WB
Species specificity:	Human, mouse, rat; other species not tested.
Positive WB detected in:	HeLa cells, mouse brain tissue
Calculated ATF2 MW:	209aa,23kd
Observed ATF2 MW:	60kd,64kd
Recommended dilution:	WB: 1:200-1:2000

Application key: WB = Western blotting, IHC = Immunohistochemistry, IF = Immunofluorescence, IP = Immunoprecipitation, FC = Flow cytometry

Immunogen information

Immunogen:	Ag2581
GenBank accession number:	BC026175
Gene ID (NCBI):	1386
Full name:	Activating transcription factor 2

Product information

Purification method:	Antigen affinity purification
Storage:	PBS with 0.02% sodium azide and 50% glycerol pH 7.3. Store at -20°C.