

ZFP36L1 Polyclonal Antibody

Catalog number: 12306-1-AP

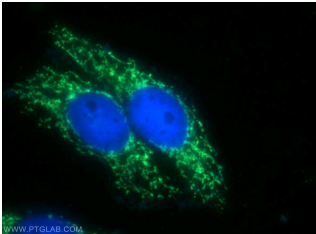
Size: 37 µg/150 µl

Source: Rabbit

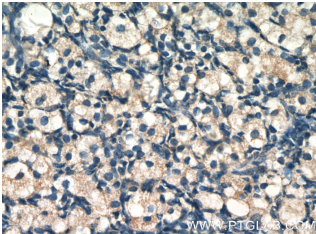
Isotype: IgG

Synonyms:

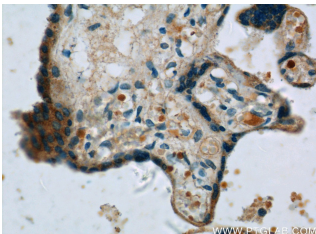
ZFP36L1; Berg36, BRF1,
Butyrate response factor 1,
cMG1, EGF response factor 1,
ERF 1, ERF1, Protein TIS11B,
RNF162B, TIS11B, ZFP36L1



Immunofluorescent analysis of HepG2 cells using 12306-1-AP (ZFP36L1 Antibody) at dilution of 1:50 and Alexa Fluor 488-conjugated AffiniPure Goat Anti-Rabbit IgG(H+L)



Immunohistochemistry of paraffin-embedded human ovary tissue slide using 12306-1-AP (ZFP36L1 Antibody) at dilution of 1:50 (under 40x lens)



Immunohistochemistry of paraffin-embedded human placenta tissue slide using 12306-1-AP (ZFP36L1 Antibody) at dilution of 1:50 (under 40x lens)

Applications

Tested applications:	ELISA, WB, IHC, IF
Species specificity:	Human, Mouse, Rat; other species not tested.
Calculated ZFP36L1 MW:	338aa, 36 kDa
Observed ZFP36L1 MW:	45-50 kDa
Positive WB detected in	HeLa cells, RAW 264.7 cells
Positive IHC detected in	Human placenta tissue, human ovary tissue
Positive IF detected in	HepG2 cells
Recommended dilution:	WB: 1:200-1:1000 IHC: 1:20-1:200 IF: 1:20-1:200

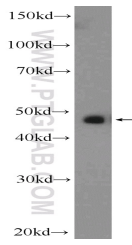
Application key: WB = Western blotting, IHC = Immunohistochemistry, IF = Immunofluorescence, IP = Immunoprecipitation

Immunogen information

Immunogen:	Ag2952
GenBank accession number:	BC018340
Gene ID (NCBI):	677
Full name:	Zinc finger protein 36, C3H type-like 1

Product information

Purification method:	Antigen affinity purification
Storage:	PBS with 0.1% sodium azide and 50% glycerol pH 7.3. Store at -20°C.



HeLa cells were subjected to SDS PAGE followed by western blot with 12306-1-AP(ZFP36L1 Antibody) at dilution of 1:300