

## PARVA Polyclonal Antibody

Catalog number: 11202-1-AP

Size: 20 µg/150 µl

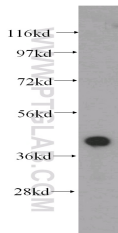
Source: Rabbit

Isotype: IgG

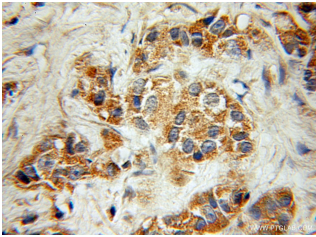
Synonyms:

PARVA; FLJ10793; FLJ12254;

MXRA2



human liver tissue were subjected to SDS PAGE followed by western blot with 11202-1-AP(PARVA Antibody) at dilution of 1:800



Immunohistochemistry of paraffin-embedded human prostate cancer using 11202-1-AP(PARVA Antibody) at Dilution 1:50 (under 10x lens)

### Applications

Tested applications:	ELISA, WB, IHC
Species specificity:	Human, mouse, rat; other species not tested.
Positive WB detected in:	Human liver tissue, human kidney tissue, Jurkat cells
Calculated PARVA MW:	42kd
Observed PARVA MW:	42kd
Positive IHC detected in:	Human prostate cancer
Recommended dilution:	WB: 1:200-1:2000 IHC: 1:20-1:200

Application key: WB = Western blotting, IHC = Immunohistochemistry, IF = Immunofluorescence, IP = Immunoprecipitation, FC = Flow cytometry

### Immunogen information

Immunogen:	Ag1694
GenBank accession number:	BC016713
Gene ID (NCBI):	55742
Full name:	Parvin, alpha

### Product information

Purification method:	Antigen affinity purification
Storage:	PBS with 0.1% sodium azide and 50% glycerol pH 7.3. Store at -20°C.