

Automated Sample Collection & PCR Detection

Solutions for Automated Sample Processing SARS CoV-2

Population Scale Testing Solution

- **Highest Accuracy PCR Test**
- **High Throughput Sample Processing**
- **Low Cost**



Collection
Detection Reagents
Instruments
Consumables

King Fisher compatible Plates & Combs



labForce ASC Vial - RNA, Extraction Free

Automated Sample Collection Vial - RNA

Stabilization of High Quality RNA, Ambient Temperature Collection & Concentration

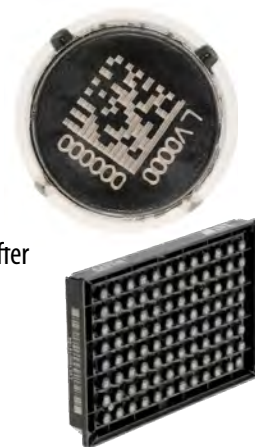
Extraction Free

The labForce ASC Vial device allows for the non-invasive collection, concentration, and stabilization of saliva, oral or nasal fluid, intact buccal cells and/or any mammalian cells collected with a swab or cytobrush allowing for real time ambient stabilization of total RNA from the point of collection to processing. Maintaining RNA stability and protecting it from degradation is a significant challenge.

Applications include: Real-time quantitative PCR • Reverse transcription PCR • Microarrays
cDNA library construction • RNA-seq • Extraction Free - RT-PCR & End Point PCR

Product Features:

- Proprietary Extraction Free Buffer for direct to RT-PCR or End Point PCR Detection
- Fast Sample Processing with the Automated Sample Vial Collection System in combination with the extraction free RNA Buffer
- Collect - Stabilize - Concentrate - Transport - Store: At ambient temperature
- Swab-free sample transport: Decrease sample processing time without compromising sample integrity
- Increase process efficiency: Extended shelf life stability (up to 3 weeks at room temp, several years at -20 C and -80 C), reduced processing time, and minimal storage footprint
- High quality RNA for downstream applications such as RT-PCR, Microarray and RNA-seq for gene expression analysis
- Room temperature stable: Reduce sample storage and transport costs by eliminating cold chain requirements
- Self collection or assisted collection in less than 2 minutes: Suitable for all population segments including infants, toddlers, and elderly
- Traceable and reliable chain of custody: LIMS compatible unique barcodes included on each collection device for efficient traceability purposes
- Scalable and easy to process: Manual and automation friendly sample processing



Thomas No.	Description	Qty
CHM00G943	ASC Vial, RNA, Extraction Free, 1ml, Internal Thread Cap, 2D Barcoded	96 Vials/Rack, 10 Racks/Box
CHM00G944	ASC Vial, RNA, Extraction Free, 1ml, External Thread Cap, 2D Barcoded	96 Vials/Rack, 10 Racks/Box
CHM00G945	ASC Vial, RNA, Extraction Free, 1ml, Push Cap	96 Vials/Rack, 10 Racks/Box
20A00U030	ASC NextSwab, Oral Swab, Sterile, 1/Sleeve	96 Swabs/Pack

iSWAB Microbiome Collection Tube and Rack

iSWAB-Microbiome (MB) is a non-toxic stabilizing technology that enables ambient collection and transport of various biosamples, and maintains the status quo at the time of collection. iSWAB-MB has been proven to efficiently inactivate bacteria, fungi, spores, and DNA/RNA viruses allowing safer transport of biological samples to processing labs, especially when samples are subject to long transit times. The buffer does not contain guanidine or related compounds. DNA and RNA from collected microorganisms remains stable at room temperature for up to 40 days for DNA, and 21 days for RNA, eliminating the need for expedited cold chain transport.



Thomas No.	Description	Qty
CHM00C705	iSWAB Microbiome Collection Tube, 1.0ml	500/Bag, 2 Bags/Pk
CHM00C706	iSwab Microbiome Collection Tube Rack, 50x1.0ml	50/Pk

Multiplex RT-PCR Assay (RUO)

The GRD FluV19 Multiplex RT-PCR Assay (RUO) detects the presence of SARS-CoV-2, Influenza A, and Influenza B RNA in specimens. Additionally, sample integrity is also assessed in each sample by detecting RNA of the human ribonuclease P (RNase P) transcript available on in viable human cells. The FluV19 multiplex assay has three key features that distinguish it from other combined Influenza/SARS-CoV-2 assays: 1) detection of RNaseP as an endogenous extraction control, 2) use of a plasmid construct that without any manipulation, serves as a control for PCR efficiency and that can be stably stored at 4 °C, and 3) use of a passive reference dye for normalization of amplification background noise. Combined, these features, along with a robust and easy-to-use extraction reagent, confer improved design, improved sensitivity, and a simplified workflow for Influenza and SARS-CoV-2 detection.

Thomas No.	Description	Qty
CHM01P927	Research Use Only (RUO) Multiplex RT-PCR Assay for the Detection of Influenza A, Influenza B, and SARS-CoV-2	1,000 Reactions

COVID-19 genesig® Real Time PCR Assay

- Rapid detection of COVID-19
- No cold chain shipping
- Lyophilised components
- Highly specific detection profile
- High priming efficiency



Thomas No.	Description	Qty
CHM01A840	COVID-19 genesig® Real Time PCR assay, 96 Tests/Pk (4 blank wells)	92/Pk

SARS-CoV-2 RT-PCR Detection Kit (COVID-19)

- Highly specific for the ORF1ab and N target markers recommended by the World Health Organization (WHO) and the Centers for Disease Control and Prevention (CDC) in the United States
- Ready-to-use reaction kit that includes MasterMix, Primers/Probes, and Internal Positive Control
- Compatible with standard RT-qPCR machines (Applied Biosystems 7500, QuantStudio 7 Flex, or Bio-Rad CFX96 recommended)



Thomas No.	Description	Qty
CHM00C520	SARS-CoV-2 RT-PCR Detection Kit (COVID-19)	50 Reactions

SARS-CoV-2 Real-Time PCR Mutation Detection

- An alternative to next generation sequencing and S gene target failure (SGTF), it enables scientists to analyze and monitor these specific genomic mutations
- Pivotal in the role of screening for SARS-CoV-2 Variants for the purpose of genomic surveillance and studies,
- Can be used as reflex testing, as only extracted RNA is needed
- Pack size: 96 reactions (master mix included)

Thomas No.	Description	Qty
21A00B496	SNPsig® SARS-CoV-2 Real-Time PCR Mutation Detection/Allelic Discrimination Kits (20I/501Y.V1) (UK)	96 Reactions
21A00B497	SNPsig® SARS-CoV-2 Real-Time PCR Mutation Detection/Allelic Discrimination Kits (N501Y) Variants with the N501 Y mutation (UK, SA and Brazil)	96 Reactions
21A00B498	SNPsig® SARS-CoV-2 Real-Time PCR Mutation Detection/Allelic Discrimination Kits (20H/501Y.V2) (SA)	96 Reactions
21A00D630	SNPsig® SARS-CoV-2 Real-Time PCR Mutation Detection/Allelic Discrimination Kits (20J/501Y.V3) (Brazil)	96 Reactions

RNAGEM V

RNAGEM V utilizes MicroGEM's novel thermophilic proteinase and buffer system to extract nucleic acids from viruses in less than 15 minutes without the need for purification.

Sample types: nasal-pharyngeal swabs in saline solution, nasal swabs, buccal swabs & sputum/saliva

Downstream applications: PCR, RT-PCR, RT-qPCR, LAMP, RT-LAMP

Key advantages:

- Nucleic acid extraction in less than 15 minutes
- Simultaneous extraction from DNA and RNA viruses
- Single-tube extraction
- No ionic detergents or chaotropic salts
- High nucleic acid recovery – Minimal loss of nucleic acids during extraction, no magnetic beads, no spin-columns
- Flexibility - suitable for low-throughput to high-throughput extraction with a single protocol
- Easily automated using standard liquid handling solutions
- Minimal plasticware required - Reduced waste and supply chain issues

Thomas No.	Description	Qty
CHM01P742	RNAGEM V 50 Reactions	50/Pk
CHM01P743	RNAGEM V 1000 Reactions	1000/Pk



prepGEM Universal

prepGEM Universal is MicroGEM's comprehensive solution for effortless high-yield DNA extraction from blood, saliva, and tissues. It is also perfectly suited for extracting DNA from cell cultures. All within a single tube, this method ensures no loss of DNA and excels with low cell number extractions. This kit is an excellent tool for researchers performing confirmatory genotyping of transfected cells following **CRISPR/Cas9** gene editing and is also suitable for **STR, PCR, qPCR**, whole genome amplification, and amplicon sequencing. prepGEM Universal utilizes MicroGEM's thermophilic proteinase activated with a simple temperature change. The whole process is easily automated in a single tube using standard laboratory equipment. A standard thermocycler can be programmed to carry out the extraction.

Key advantages:

- Stream-lined approach provides DNA in approximately 15 minutes
- Inhibitor-free solutions mean no harsh chemical washes or multiple steps are required
- Closed-tube extraction protects the integrity of the sample
- Simplified, hands-off workflow frees up technician time, reduces lab costs, and significantly reduces hazardous/plastic waste

Thomas No.	Description	Qty
CHM01P722	prepGEM Universal 50 reactions	50/Pk
CHM01P723	prepGEM Universal 100 reactions	100/Pk



TurboQ Real-Time PCR System

TurboQ Real-Time PCR system is designed for multiplex and routine PCR applications with up to 4 targets. Inheriting the proven PCR instrument core competency from Blue-Ray Biotech, TurboQ brings versatile features to help lab researchers in performing diagnostic testing and researches. 110V. 4 Detection Channels.

- 4 Optical Channels
- CCD-Based Detection System
- Motorized Plate Carrier Tray
- +/- 0.25°C Block Temperature Control Accuracy
- Software with Complete Analysis Functions



Thomas No.	Description	Qty
21A00D597	TurboQ Real-Time PCR System	Each

UF-150 GENECHECKER™ and Rapichip™ PCR Chips

Fast and easy qPCR platform that yields results in as little as 12 minutes!

- Patented chip based design provides extremely rapid output - "30 Cycles in 12 Minutes"
- Real-time detection through dedicated software, GENERECORDER
- Intuitive control with LED indicated jog-dial and LCD display
- Conventional and reverse transcriptase (RT) PCR with single device



Thomas No.	Description	Qty
1162D03	UF-150 GENECHECKER™ Ultra-Fast Real-Time qPCR System	Each
1162D04	Rapi:chip PCR Chip for Model UF-150 GENECHECKER - Small Pack	48/Pk
1162D05	Rapi:chip PCR Chip for Model UF-150 GENECHECKER - Medium Pack	384/Pk

Master Mixes for GENECHECKER™ Ultra-Fast PCR System

- Optimized for ultra-fast reaction with GENECHECKER™
- High sensitivity, efficiency, reproducibility and minimized PCR inhibition
- Uses novel antibody-mediated hot-start DNA polymerases
- Options are available for general thermal cycling, real-time analysis and one-step RT-PCR



Thomas No.	Description	Qty
C814F11	Rapi:Detect Master Mix with Fluorescent Dye for Model UF-150 GENECHECKER (400 Reactions) / 1mL x 2 Tubes	2/Pk
C814F12	Rapi:1-Step Onestep RT-PCR Kit with Fluorescent Dye for Model UF-150 GENECHECKER (400 Reactions) / 1mL x 2 Tubes	2/Pk
C752R67	Rapi:Amp Master Mix with Gel Loading Dye for Model UF-150 GENECHECKER (400 Reactions)	2/Pk
C752R66	Lyophilized Master Mix, Rapi:Lyo Probe 480 Reactions, for use Model UF-150 GENECHECKER (10 Reactions/Tube)	48/Pk



Sequence BioTech - Precision Series Pipettor Plus Advanced Benchtop Pipettors

Innovative, Easy-to-Use, Advanced Benchtop Pipettor

- Ergonomic large comfortable handle grip
- Compact, will easily fit into a fume hood
- Works with the entire series of universal-fit Sharp Elite pipette tips
- Enhanced motor control for acceleration and deceleration
- Six pipetting speeds and custom speed control settings
- LED Lighting - dimmable directly over pipette tips
- Improved programmability by adding extra commands and 4x memory
- Lightweight, only 22 pounds
- Two year warranty

**Uses universal
LabForce tips!**

Thomas No.	Description	Qty
1144A63	Precision Series Pipettor Plus Advanced Benchtop Pipettor, 300 uL Pipetting Head, 2-Year Warranty	Each
1144A64	Precision Series Pipettor Plus Advanced Benchtop Pipettor, 25 uL Pipetting Head, 2-Year Warranty	Each
1144K71	384 EZ Tray - Accessory for using 384 well plates on Precision Series Pipettor Plus	Each

4titude - A4s™ automatic heat sealer

Automated Heat Sealing in less than 15 seconds

The perfect solution for automated heat sealing of microplates, PCR plates, assay plates and storage plates used in medium to high-throughput or full automation applications

- Compable with a wide range of plate types
- Color touch screen with intuitive user interface

**NO AIR SUPPLY
NEEDED**



Thomas No.	Description	Qty
1149T97	a4S Automatic Roll Heat Sealer w/Power Cord, Manual, Plate Support Adapters A and B, 24-Month Warranty	Each

IntelliXseal™ SA Semi-Automatic Sheet Heat Sealer

Semi-automatic sheet heat sealer compatible with a wide range of seals and microplates, PCR and assay plates, as well as storage plates of differing designs and heights.

- Variable temperature and time settings, sealing conditions are easily optimized to produce a 100% seal, eliminating sample loss
- Plate and seal are placed on the holder, the "Operate" button pressed and the drawer automatically closes
- The sealing process is controlled by an electric mechanism; this unique feature eliminates operator variation, giving a consistent seal every time and reducing the damage caused to microplates by over-sealing



Thomas No.	Description	Qty
20A00U782	IntelliXseal SA Semi-Automatic Sheet Heat Sealer	Each

Cole-Parmer - PCRmax Alpha 4 Thermal Cyclers

- Flexible - your choice of one, two, or four block capacities in 96-well, 384-well, or mixed formats
- Independently control each block for simplified temperature and space optimization
- Software allows quick access to commonly used protocols
- Save precious lab space with 4-block system - quad 384-well capacity



Thomas No.	Description	Qty
1179Y68	PCRmax Alpha 4 Thermal Cycler, 4 x 384-well microplate capacity; 100-230V	Each
1179Y70	PCRmax Alpha 4 Thermal Cycler, 4 x 96-well microplate capacity; 100-230V	Each

TurboCycler 2 Thermal Cycler

TurboCycler 2 thermal cycler is designed specifically to enhance PCR efficiency and accuracy. It is equipped with a 7" sensitive touchscreen and a friendly graphic user interface, which makes operation highly intuitive. With flexible ramp rate and gradient temperature control, TurboCycler 2 greatly increases PCR accurate optimization. The Wi-Fi function enables you to monitor the PCR run status anytime remotely with walk-away convenience. 110V. With 96-well Sample Block. Wi-Fi Upgrade Module.



Thomas No.	Description	Qty
21A00D593	TurboCycler 2 Thermal Cycler	Each



Benchmark - Hermle Z287-A Microplate rotor bundle

- Compact, only 14in wide
- Up to 14,000 rpm and 16,058 xg
- Indicator light, easily view cycle status, unique EZ-Scroll™ touch pad
- Speed Range : 200 to 14,000 rpm
- Max. RCF : 16,058 xg
- Max. Capacity : 6 x 50ml

Thomas No.	Description	Qty
20A00K132	Hermle Z287-A Microplate Rotor Bundle: includes Z287-A Microcentrifuge PLUS and Microplate Rotor	Each

labForce MicroPlate Centrifuges

- Quickly spins down droplets in PCR plates
- Unique swing-out rotor design prevents spillage (patented)
- Half the size of traditional centrifuges
- Accepts all popular types of PCR plates (skirted, semi, and non) and most microtiter plates

labForce's MicroPlate Centrifuge is the first "mini" sized centrifuge with a swing out rotor for microplates. Centrifuging plates before PCR ensures all reactants are in the bottom of the wells for proper concentrations and improved yields.

With a g-force of 600 xg, most samples can be spun down in less than 20 seconds. To end a run, simply open the lid and the automatic, electric brake brings the rotor to a quick, smooth stop in just 4 seconds. Plates can then be easily removed from the rotor.



Thomas No.	Description	Qty
1154J32	MicroPlate Centrifuge with rotor and plate carriers, 115V	Each

Tecan - Spark® Multimode Microplate Reader

The fully flexible detection platform with smart automation

- Absorbance – Fast, accurate, versatile
- Fluorescence – Unmatched flexibility for any assay or budget
- Luminescence – Unparalleled sensitivity in the widest range of applications
- Cell counting and imaging – affordable imaging for increase data confidence

**END POINT PCR
DETECTION**



Thomas No.	Description	Qty
20A00U057	Tecan Spark® Multimode Microplate Reader	Each

LVL Technologies - SAFE® Cap Fully-Automatic 96-Channel De-/Capper for Internal Thread Caps

- Opens and closes 96 caps at once
- Can be operated as an integrated and standalone device
- De-/Capping within 50 seconds
- Very small footprint: 408 x 234 x 388 mm



Thomas No.	Description	Qty
1148R87	SAFE® Cap 96S Fully automatic 96-Channel for internal thread caps	Each



Ziath - Mirage Single Rack 2D Scanner w/Cryoprotection™

- The most compact camera-based 2D rack reader available
- Low profile allows use on robotic liquid handling systems
- Scans all current, commonly used, SBS format racks

Thomas No.	Description	Qty
1149H84	Ziath Mirage Single Rack 2D Scanner w/Cryoprotection™	Each

CoolRack XT PCR384 & PCR96

Ideal for cooling, snap freezing, heating or thawing

- Helps keep samples organized and dry with all wells upright and indexed
- Reproducible method
- SBS footprint



Thomas No.	Description	Qty
1200R93	CoolRack XT PCR384 for 384-well plate	Each
1200R91	CoolRack XT PCR96 for 96-well plate	Each

CoolBox XT System, Single Capacity, Green

All day cooling and freezing workstation with lid

- Fits a choice of CoolRack modules
- Cold samples for up to 16 hours; Frozen samples for up to 8 hours
- Small footprint



Thomas No.	Description	Qty
1200U97	CoolBox XT workstation, single capacity, green	Each
1200U96	CoolBox XT workstation, single capacity, Purple	Each



Nasal Test Swabs

Thomas No.	Description	Qty
20A00V170	iClean Flocked Nasopharyngeal Test Swabs	30/Bgs; 200/Pk; 6000/Cs
20A00R924	Microbrush® Nasopharyngeal Test Swabs	300/Pk; 1500/Cs
20A00M258	Miraclean Technology Co. Ltd Oral Swab, ABS Handle, Foam Tip, 100mm, 35mm Breakpoint	100/Pk; 5000/Cs

labForce - ASC NextSwab, Oral Swab, Sterile

Thomas No.	Description	Qty
20A00U030	labForce ASC NextSwab, Oral Swab, Sterile	1/Sleeve; 96/Pk



labForce - Sharp Elite™ Standard & Barrier (Filter) Tips

Tip Features include:

- Ultralow retention resin maximizes your sample recovery
- Ultraclear resin allows sample volume to easily be visualized through the tips
- Fine Point Orifice ensures complete sample release and highest accuracy
- Certified free of detectable RNase, DNase, DNA, PCR inhibitors, and pyrogen-free
- Made in the USA

Thomas No.	Description	Qty
1149J70	10 µL Sharp Elite™ Barrier Tips, Racked Sterile, Clear, Graduated, Low-Retention	96/Rk; 960/Pk; 4800/Cs
1149J93	10 µL XL Sharp Elite™ Racked, Graduated, Clear, Graduated, Low-Retention	96/Rk; 960/Pk; 4800/Cs
1149J96	10 µL XL Sharp Elite™ , Clean Pack Reloads, Clear, Graduated, Low-Retention	96/Rk; 960/Pk; 9600/Cs
1149J73	300 µL Sharp Elite™ Barrier Tips, Racked Sterile, Clear, Graduated, Low-Retention	96/Rk; 960/Pk; 4800/Cs
1138M56	300 µL Sharp Elite™ Racked Tips, Clear, Graduated, Low-Retention	96/Rk; 960/Pk; 4800/Cs
1148B86	300 µL Sharp Elite™ Tips, Clean Pack Reloads, Clear, Graduated, Low-Retention	960/Pk; 9600/Cs

labForce - Amplifyt™ 96 & 384-Well PCR Plates

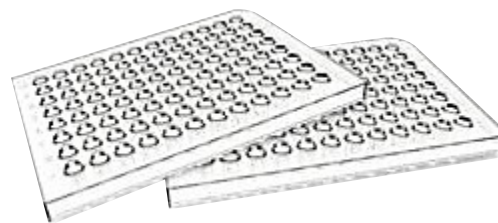
- Broad thermal cycler compatibility with single corner notch
- Easy well identification with High-contrast, black Alpha-Numeric printing
- High Efficiency heat transfer with Ultra-thin, uniform wells
- Well ridges reduce sample evaporation when sealing with film or foil
- Manufactured from high-clarity, ultra-pure polypropylene (meets FDA 21 CFR 177.1520 & USP Class VI)
- Certified free of detectable DNase, RNase, DNA, PCR inhibitors, and tested pyrogen-free

Thomas No.	Description	Qty
1148A96	384-Well PCR Plates, ABI-Style, A24 Notch, Clear PP	PP 10/Pk; 100/Cs
1149K05	96-Well PCR Plates, Full-Skirted, Clear PP	PP 10/Pk; 100/Cs
1149K03	96-Well PCR Plates, Semi-Skirted, ABI-Style, Clear	25/Pk; 100/Cs



96-Well Rigid PCR Plates

- Compare to Hard Shell & Twin-Tec Plates
- Ultra-Low DNA/RNA binding with uniquely optimized polymer
- Reduce evaporation with raised well rims for effective sealing
- Suitable for Real-Time Quantitative PCR and End Point PCR



Thomas No.	Description	Qty
1144C27	96 Well Full Skirt PCR Plate, Rigid Style, Clear	20/Pk;400/Cs
1144C28	96 Well Half Skirt PCR Plate, Flat Top, Rigid Style, Clear	20/Pk;400/Cs

4titude - Clear Heat Seals

- Seal integrity range: -80°C to 80°C (to 110°C with a pressurized heated PCR lid)
- Optically clear for RT-PCR & End Point PCR Detection
- Free from DNase, RNase, human genomic DNA, and endotoxin/pyrogen

Thomas No.	Description	Qty
1149T28	Clear Heat Seal; peelable heat sealing film, 125 x 78 mm	100/Pk
1149T22	Clear Heat Seal; peelable heat sealing film, 1 roll (500 m x 78 mm)	1 Roll
1149T30	Clear Heat Seal; peelable heat sealing film, 1 roll (350 m x 115 mm)	1 Roll



Scilutions - 96 Deep Well Reservoir for Automated Liquid Handling Systems

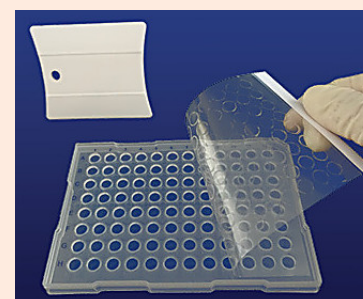
- Highest Recovery – Optimized well design and Low binding polypropylene
- Highest fill volume in the market – 450ml volume!
- Universal Compatibility – ANSI SLAS 1-2004 design is Plug & Play
- Certified DNase / RNase / Pyrogen Free



Thomas No.	Description	Qty
20A00D902	96 Deep Well Reagent Reservoir, Polypropylene, High Recovery, Low Dead Volume	5/Sleeve; 20/Pk
20A00D903	96 Deep Well Reagent Reservoir, Polypropylene, High Recovery, Low Dead Volume, Sterile	1/Sleeve; 20/Pk

PlateSeal™ Optically Clear Polyolefin Film with Pressure Sensitive Adhesive

- Ideal for qPCR (real-time), Long-Term Storage and Protein Crystallization
- Certified DNase- & RNase-free
- High optical clarity and low auto-fluorescence make this product ideal for qPCR (real-time) and protein crystallography
- Chemically resistant to DMSO, acetonitrile and methanol; excellent choice for long-term compound storage and HPLC



Thomas No.	Description	Qty
1150P97	PlateSeal™ Optically Clear Polyolefin Adhesive Film	100/Pk

2.2mL 96-Well Plates

2.2mL 96-well plate is ideal for magnetic bead-based nucleic acid and protein affinity purification performed on automated separation systems. For use with Viral RNA extraction, DNA extraction, RNA/DNA quantification, immunoprecipitations and many more KingFisher applications. Tested for compatibility with KingFisher™ instruments

- Automation compliant footprint
- Non-pyrogenic, DNase/RNase free
- Storage down to -80°C
- Alphanumeric grid reference



Thomas No.	Description	Qty
20A00H640	2.2 ml 96-Well Deep Well Plate, V Conical Bottom, Square well, Sterile	50/Cs
1144A72	2.0mL, 96-Well Plate, Clear, Square Top, Round Bottom with "V"; 5 Plates per Bag, 10 Bags per Case	50/Cs

96-Well Elution Plates

96-well elution plate is ideal for magnetic bead-based nucleic acid and protein affinity purification performed on automated separation systems.

- Automation compliant footprint
- Non-pyrogenic, DNase/RNase free
- Storage down to -80°C
- Alphanumeric grid reference



Thomas No.	Description	Qty
20A00F755	0.5 ml 96-Well Deep Well Plate, V Conical Bottom, Square well, sterile	50/Cs
1144A71	200ul, 96-Well Plate, Clear, Square Top, Round Bottom, V-Shaped; 5 Plates per Bag, 10 Bags per Case	50/Cs
1149J34	480uL 96-Well Plate, Clear, Round Well, V-Bottom	100/Cs

96-Well Combs

96-tip magnetic covers are ideal for magnetic bead-based nucleic acid and protein affinity purification performed on automated magnetic particle processing systems.

- Compatible with KingFisher™ and KingFisher™ FLEX™ instruments
- Made from Polypropylene
- Temperature resistance from -80°C to 120°C



Thomas No.	Description	Qty
20A00F756	96 Tip Combs for Magnetic applications, sterile	50/Cs
20A00L654	Comb for 96-magnetic head on KingFisher™ FLEX™	100/Cs



a Thomas Scientific, LLC service

PEAK Bio Solutions is a service offered by Thomas Scientific, dedicated to streamlining workflow processes. We believe that partnering with scientists to better understand their challenges allows us to work collaboratively toward a common solution. More than just a distributor, we are an active consultant for highly complex life science workflows.

- 2D barcode technology
- Automation and high-throughput screening
- Cell culture
- Cryogenic storage
- PCR and genomics
- Liquid handling

Experienced Team

Our team has in-depth technical training and experience, which allows us to optimize our customers' life science workflows. Unlike our competition, the **PEAK Bio Solutions** team specializes in laboratory automation solutions. This equips us with knowledge for highly specialized products so we can provide solutions to our customers' unique challenges.

Innovative Products

PEAK Bio Solutions is process-driven rather than catalog-driven. We talk with scientists to discover the best technical solutions for customer needs. We are always bringing in new products that provide innovative solutions that can help our customers streamline their productivity, allowing them to achieve more in less time.

Unparalleled Service

As scientists, we understand that time and quality are critical. Our goal is to provide quick shipments and on-time deliveries, as well as reduce the number of backorders by shipping complete orders, up to 97%, within 24 hours.

Affordable Pricing

Our approach is consultative, not price-driven. Our products are priced fairly while maintaining excellent quality and value.



Customers operating in the Life Science arena often have higher service demands than the traditional research-based customer or organization. For this reason, and to ensure that all of our customers benefit from Thomas Scientific's desire to meet and exceed their expectations, Thomas Scientific is proud to introduce **PEAK Bio Solutions** to its growing capabilities and services.

PEAK Bio Solutions provides Thomas Scientific customers in the production environment with experienced Customer Success Specialists and a dedicated Workflow Consultant that understands and can streamline the unique process for your application.

Customers from Biotechnology Product and Service, to Testing and Clinical Diagnostic, and/or Production Laboratories utilizing automated workflows, we welcome you to Thomas Scientific and look forward to assisting you through **PEAK Bio Solutions**.



ThomasSci.com 833.544.SHIP (7447)
CustomerService@ThomasSci.com

Connect With Us:

